

949 Pipeclay Road, Pipeclay, NSW, 2446

Acreage Semi-rural For Sale

Sunday, 3 November 2024

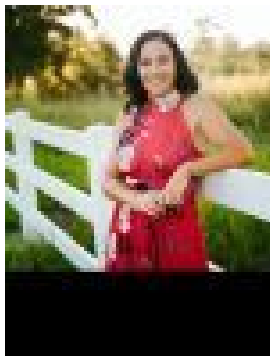
949 Pipeclay Road, Pipeclay, NSW, 2446

Bedrooms: 2

Bathrooms: 1

Parkings: 10

Type: Acreage Semi-rural



Julie Slater

Characterful and charming cottage on fertile 37 acres with absolute riverfrontage

This quintessential country package located only 12kms to the local village, combines an authentic 100 year-old home set on a useable acreage (15.05ha) with a stunning stretch of the Hastings River wrapping around approximately 800 metres of the property.

The property has a rich and varied farming history from its original settlement and now presents as a lovely rural getaway that's still close enough to Wauchope and Port Macquarie for accessing amenities.

The modest home is brimming with character features inside and out with extensive verandahs around three sides providing useful additional space for entertaining and relaxing.

Lovingly maintained and improved over the years, highlights include new heritage-style joinery throughout, 10 foot ceilings, an attractive kitchen, modernised bathroom/laundry, wood heater and polished timber floors.

There is scope for enhancements and improvements, however, the home offers a cozy haven ready to be enjoyed from day one.

Extensive storage is provided by 10 bays of shedding and there is an original dairy with attached yards and race.

The land is ideal for hobby farmers offering easy care pastures that gently slope toward the attractive freshwater riverfront.

Buyers looking for that elusive charming country package should contact the exclusive agent Julie Slater on 0499 994 241 for more information.

Property Code: 660