

"The Farm" 54 Tallawong Close, Wallaroo, NSW 2618 **RayWhite**

Acreage For Sale

Tuesday, 7 January 2025

"The Farm" 54 Tallawong Close, Wallaroo, NSW 2618

Bedrooms: 6

Bathrooms: 2

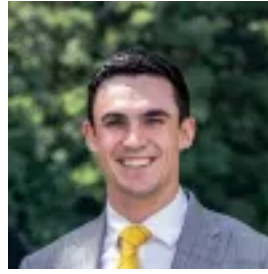
Parkings: 3

Area: 40 m2

Type: Acreage



George Southwell
0429838345



Connor Rorison
0473333707

\$2,900,000

"Our age and health have led us to make the difficult decision to downsize, offering a rare opportunity for a new family to enjoy this beautiful property" Ray White Rural Canberra | Yass | Murrumbateman proudly presents 'The Farm' at 54 Tallawong Close, Jeir NSW-a grand rural lifestyle estate just a short drive from Canberra. This architecturally designed double brick residence, built in 1986, offers 415m² of living space, with multiple living areas, an open-plan kitchen, and breathtaking views from every room. The home boasts two fireplaces, ample storage including a loft, and six bedrooms with 2.5 bathrooms. Outdoors, the property is an entertainer's delight, featuring a full-size, lit tennis court, an in-ground swimming pool, a spa room, and beautifully landscaped gardens. Set on 40.51 hectares (100 acres) of rolling hills, 'The Farm' is equipped for equestrian and grazing pursuits. It includes 4 paddocks with a reticulated water system, 6 dams, cattle yards, a machinery shed with three-phase power, a working round yard, horse stables, and a horse walker. Located just 1km from the Barton Freeway, it strikes the perfect balance of rural serenity and city convenience, with a 20-minute drive to Canberra CBD, 3 hours to Sydney, and just 8 minutes to Hall Village. 'The Farm' is more than just a property; it's a chance to embrace a rural lifestyle while maintaining close proximity to urban amenities. With its modernist design, spacious interiors, and extensive outdoor features, this estate is ready to welcome its next generation of owners.