

# 10/20 Teak Close, Fletcher, NSW, 2287

## Apartment For Sale

Monday, 16 December 2024



10/20 Teak Close, Fletcher, NSW, 2287

**Bedrooms: 3**

**Bathrooms: 2**

**Parkings: 1**

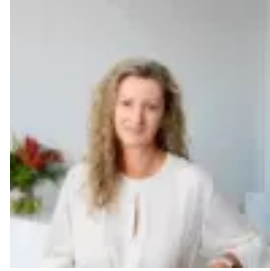
**Type: Apartment**



Theresa Day  
0249416111



Cameron Day  
0249416111



Kim Kelly  
0249416111

## **Modern Living, Stylish Design and Low Maintenance Lifestyle**

Private Inspections By Appointment Available Throughout the Christmas Break

This boutique development opposite "Wentworth Creek Bushland Reserve" affords its residents Modern Living, Stylish Design and Low Maintenance Lifestyle. Perfect Investment opportunity for future growth that First Home Buyers and Investors alike will recognise and appreciate.

Split design over three levels takes advantage of maximising space on offer to create a home with dedicated living zones that is open and flooded with natural light and cross breeze comfort.

On entry the main air conditioned living area opens directly to the sun filled front yard through large glass doors. The space has a wonderful cosy feel that is enhanced by the split up to the next living area. You will love coming home here every day!

Spacious designer kitchen with large stone island for casual dining and ample storage that flows to both dedicated dining room and rear private courtyard perfect for summer BBQ's and entertaining.

Upstairs all of the bedrooms are generously sized with Built in Robes, boast ceiling fans and the main has a oversize ensuite.

Features ~ Dedicated downstairs powder room, Storage options over both levels, Study Nook, Air conditioning, Low Maintenance, Single auto Garage with Internal Access.

Highly Recommended.