

10/499 New South Head Road, Double Bay, NSW, 2028

PPD REAL ESTATE

Apartment For Sale

Monday, 28 October 2024

10/499 New South Head Road, Double Bay, NSW, 2028

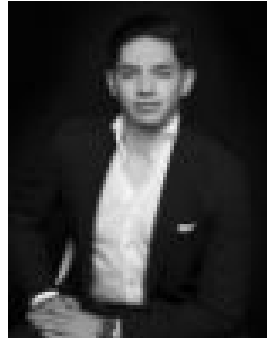
Bedrooms: 2

Bathrooms: 1

Type: Apartment



Sean Poche
0283551136



Nate Chacon
0283551143

An Elegant Art Deco Hideaway With Tranquil Garden Surrounds In A Harbour Village Setting

Architectural charm and harbourside living combine in this boutique Art Deco apartment to deliver a private village hideaway in the heart of Double Bay between Cross Street's celebrated shopping hub and idyllic Redleaf Pool. Secluded from the road and cocooned in leafy greenery, the whisper-quiet apartment takes pride of place on the top floor of a secure 1930s block of 10. Wrapped in picture windows with every room enjoying a tranquil garden outlook, the oversized two-bedroom apartment has been tastefully renovated retaining its authentic period charm with elegant proportions complemented by high ornate ceilings and polished Tallowwood floorboards. With only one small common wall, the 78sqm approx apartment offers a sense of tranquility that's hard to find so close to the action. Stroll down to Kiaora Lane's retail hub and eat street, walk across to the sand beach and enjoy spectacular sunsets over the harbour icons or explore the boutique shops, gourmet delis and cosmopolitan restaurants that make Double Bay the most fashionable harbour village in Sydney.

- Secure Art Deco block built c1933
- Hidden from the street, flagstone entry
- Peaceful and private top floor setting
- Entry hall, original Tallowwood floors
- 2 large bedrooms with leafy outlooks
- Both with floor-to-ceiling built-ins
- King-sized main bed, ornate ceilings
- Living room anchored by a fireplace
- Elegant dining with a lush garden view
- Ornate ceilings and vintage chandeliers
- Quality solid granite gas kitchen
- Plentiful built-in storage throughout
- Huge windows with built-in fly screens
- Immaculate marble-tiled bathroom
- First time on the market in 22 years
- Stroll down to Bay Street's dining scene
- 500m to picturesque Redleaf Pool
- 450m to Kiaora Lane and Woolworths
- 650m to Double Bay Beach and ferry