

**118/436-442 Huntingdale Road, Mount Waverley,
Vic 3149**

buxton

Apartment For Sale

Tuesday, 7 January 2025

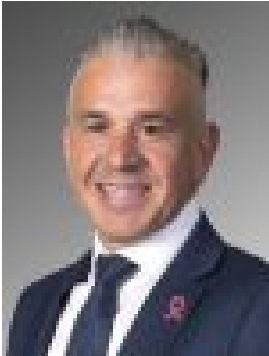
118/436-442 Huntingdale Road, Mount Waverley, Vic 3149

Bedrooms: 2

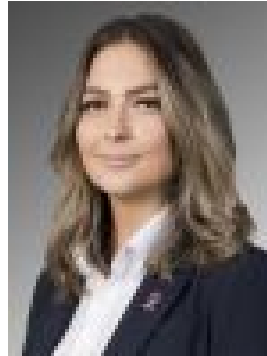
Bathrooms: 1

Parkings: 1

Type: Apartment



Peter Gigis
0411437738



Emily Duvnjak
0426902543

\$520,000

This spacious, light-filled two-bedroom apartment, complete with one bathroom and a separate powder room, offers luxurious finishes and an exceptional sense of space, situated within the exclusive Contessa complex for ultimate lifestyle convenience. The open-plan living and dining areas, featuring elegant timber floors and contemporary tones, seamlessly flow into a modern kitchen with sleek stone surfaces. Both generously sized bedrooms include built-in robes, with the master bedroom offering access to the stylish main bathroom. The apartment also features a balcony off the master bedroom, providing a peaceful retreat. Additional highlights include a large entertainer's balcony off the living area, split-system heating and cooling, and a basement car space. Ideally positioned with a bus stop at your doorstep, this apartment offers easy access to quality schools, Monash Freeway, Jordanville Station, Chadstone Shopping Centre, Oakleigh Shopping precinct, and Holmesglen TAFE—making it an ideal choice for both owner-occupiers and investors.*Please Note* Buxton Real Estate may refuse to provide further information about the property should you prefer not to disclose your Full Contact Details including Phone Number. Photo id required upon entering the property.