

12A/29 Queens Road, Melbourne, Vic 3004

Apartment For Sale

Tuesday, 7 January 2025

12A/29 Queens Road, Melbourne, Vic 3004

Bedrooms: 3

Bathrooms: 2

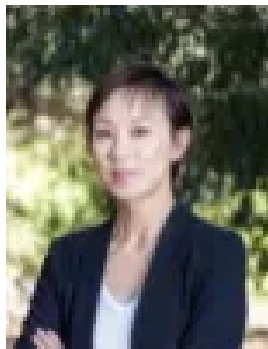
Parkings: 2

Area: 204 m2

Type: Apartment



Janssen Xiang
0411659290



Renee Song
0433952077

\$1,800,000 - \$1,980,000

A luxury living with 180-degree panoramic Albert Park & CBD skyline view, spanning the entire north-western boundary of the 'sky' apartment. A house like apartment offers an immediate lifestyle appeal that is simply unmatched. With an exceptionally spacious living and dining room, seamlessly flowing onto full-length balconies which is accessible from two of the three generously sized bedrooms. The spacious corner master bedroom, with its own marble ensuite and walk-in robe. Sun-filled open kitchen, with an elevated island bench captures mesmerizing vistas of the city. With central heating and cooling, video-com, and two conveniently situated side-by-side parking spaces. With exclusive access to Sky's resort-style amenities, a gym, indoor-swimming pool, community room, residents' lounge, and BBQ area. Located in the heart of Melbourne's prestigious St Kilda Road precinct, with plenty of parklands, transport options, and the bustling city all within easy reach. • Unobstructed Albert Park Lake View • City View • 204sqm approx + 2 Car Spaces Terms 10% deposit, balance 30/60/90 days PLEASE NOTE: Open for inspection times and property availability is subject to change or cancellation without notice. Follow us on Facebook: <https://www.facebook.com/janssenandco>