

**17/11 Llewellyn Street, New Farm, Qld 4005**

**McGrath**

**Apartment For Rent**

Thursday, 9 January 2025

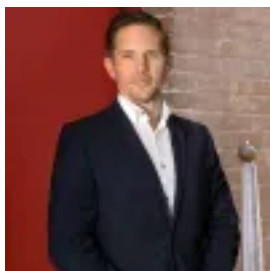
17/11 Llewellyn Street, New Farm, Qld 4005

**Bedrooms: 1**

**Bathrooms: 1**

**Parkings: 1**

**Type: Apartment**



Ryan Greer  
0736381400

**\$540 pw**

Conveniently positioned for easy access to New Farm Village, this top floor apartment offers easy living in a key lifestyle location. With quiet street appeal and only moments to the area's excellent amenities, City Cat services and Brisbane City.- Light filled living, with magnificent breezes- Queen size bedroom with ample cupboard space- Ensuite off main bedroom- Additional study area that is separate from the living area- Brand new modern kitchen and appliances - River glimpses (from the back room)- One off street undercover parking