

1705/500 Pacific Highway, St Leonards, NSW, 2065



Apartment For Sale

Tuesday, 26 November 2024

1705/500 Pacific Highway, St Leonards, NSW, 2065

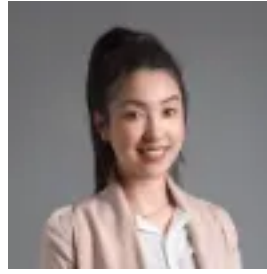
Bedrooms: 1

Bathrooms: 1

Type: Apartment



Jeffrey Li
0298848228



Faye Dai
0298848228

Large North Facing Spacious Studio Apartment set within 'Landmark'

Located on the 17th floor of the prestigious 'The Landmark' tower, this luxurious north-facing studio apartment offers a refined urban living experience. This premium studio apartment presents an exceptional opportunity for first-time buyers or investors, offering a prime location, excellent local amenities, and superior design and craftsmanship.

Apartment Features:

- North-facing studio with abundant natural light
- Elegant engineered flooring and high ceilings throughout
- Luxury stone gas kitchen with Miele appliances
- Iconic architectural design with Club 500 resort-style concierge service
- Security access, multiple lifts, and stylish communal spaces
- 24-hour concierge, sky garden, gym, sauna, spa, meeting rooms, private cinema, music room, yoga room, virtual golf, workshop (tools room), library, and guest lounge
- Just a 2-minute walk to Mall 88, Coles Supermarket, and a variety of shops and dining options
- Only 3 minutes to St Leonards Train Station and 3 minutes to the new Crows Nest Metro Station
- Moments from the vibrant Crows Nest dining precinct and shops