

19/1 Shepherd Street, Chippendale, NSW, 2008



Apartment For Sale

Thursday, 14 November 2024

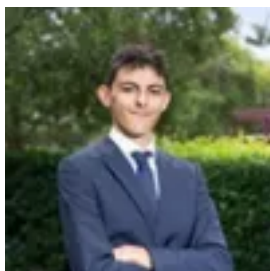
19/1 Shepherd Street, Chippendale, NSW, 2008

Bedrooms: 2

Bathrooms: 2

Parkings: 1

Type: Apartment



Eli Jacques

Modern Single Level Apartment in Boutique Building

With one of the best layouts in the tightly held Axis Apartments, this renovated security apartment overdelivers in terms of space, lifestyle and convenience in the heart of Chippendale's arts and creative hub. Facing east and opening to wide decks, the first-floor apartment's exceptional layout features two private bedrooms including a king-sized master suite and an impressive 119sqm approx of living space. One of only 23 in the secure Axis, the apartment benefits from secure level lift access and comes with parking on title which is a massive bonus so close to the city. Opposite Broadway's retail and entertainment hub, this is a perfect spot for the urbanite just 250m to Victoria Park and the heated open-air pool with cafes and pocket parks all around and a quick 2km trip into the city.

- Spacious modern interiors with new engineered floorboards
- 2 large bedrooms with built-in robes and plush carpeting
- King-sized main with an ensuite and a sunny 5m wide deck
- Quality black granite gas kitchen, stainless steel appliances
- Dining with custom joinery and spacious glass-fronted living
- Entertainer's deck with an east aspect and urban outlook
- 2 fresh bathrooms, main with a bath, and an internal laundry
- Reverse cycle air, gallery hanging system, video intercom
- Plentiful built-in storage, level lift access to secure parking
- Opposite Broadway Shopping Centre, 250m to Victoria Park
- 450m to Sydney University, UTS and Notre Dame University
- 2km to the CBD, close to Newtown and RPA Hospital precinct
- Rates: Water \$180pq, Council \$308pq, Strata \$2365pq (All approx.)

Contact Ercan Ersan 0423 941 112

Eli Jacques 0427 721 754

Our recommended loan broker: Tommy Nguyen (www.loanmarket.com.au/tommy-nguyen)