

**32/124-126 Parramatta Road, Camperdown, NSW
2050**

D&H

Apartment For Rent

Wednesday, 8 January 2025

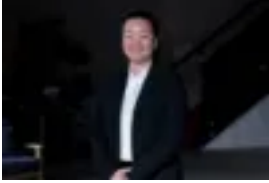
32/124-126 Parramatta Road, Camperdown, NSW 2050

Bedrooms: 2

Bathrooms: 2

Parkings: 1

Type: Apartment



Mylisa Nguyen

0295546634

\$1,000 per week

A two-story apartment with a townhouse feel enjoys a quiet end position on the top floor with minimal common walls and has district views from a north facing balcony. You will find the apartment is on the top level which makes the property extremely private and quiet. There's a whole floor of living space, and the apartment is designed so each bedroom has its own bathroom - plus a study area between. With city buses at the door, and walking distance to Annandale, Glebe, Newtown, the RPA and Sydney Uni, this has to be one of the area's best places to live. There are also fantastic views to the west which makes the entire property bright throughout. Features Include:- Air conditioning in the living/dining area with a built in entertainment unit - Open plan kitchen with stainless steel appliances & gas cooking - Built-in robes in both bedrooms, with a large study area on the lower level- Large laundry with a guest toilet- Security car space near the lift and with rear lane access - No pets Camperdown is so convenient to everything and if you're feeling energetic then you can walk into the city or Darling Harbour. You can get to just about anywhere by public transport (with plenty of buses to Central Station and the CBD) and there are shops, cafes and foreshore parks all nearby. Apply through Ignite by realestate.com.au