

35/20 Close Street, Canterbury, NSW 2193

Apartment For Rent

Tuesday, 7 January 2025



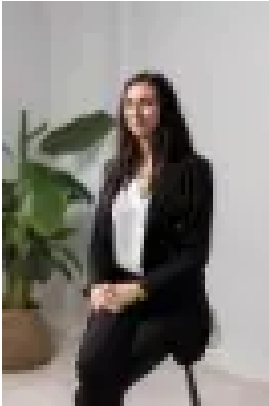
35/20 Close Street, Canterbury, NSW 2193

Bedrooms: 1

Bathrooms: 1

Parkings: 1

Type: Apartment



Elizabeth Celi
0295181655



Emma Karhani
0424855961

\$620 per week

This amazing, oversized apartment of approximately 81 sqm internally is situated in a quiet, full brick and well-maintained security complex with a delightful leafy outlook. The apartment is located adjacent to the Cooks River parklands/cycle tracks and is close to local cafes and shops, including Woolworths & Aldi. Located minutes from Canterbury road, it is an easy commute to the city via Canterbury train station. Securely positioned on an upper floor location with accessible lift access, this property offers many unique features, including:

- A very spacious and naturally bright open plan living/dining area with an office nook
- A huge master bedroom with a glass-panelled built-in wardrobe, ceiling fan, and balcony outlook
- A modern, state-of-the-art open plan kitchen with gas cooking, Caesar stone bench tops, a dishwasher, and stainless-steel appliances
- A large, covered balcony ideal for alfresco dining and entertaining
- A smart internal laundry/storage room offset within a logically flowing floor plan
- A spacious, fully tiled modern bathroom with a combination shower and bathtub
- Direct lift access to a secure 25 sqm car space with an additional storage alcove

The property has a total allotment of approximately 106 sqm and is larger than many of the 2-bedroom apartments currently on the market.