

608/538 Canterbury Road, Campsie, NSW, 2194



Apartment For Sale

Saturday, 30 November 2024

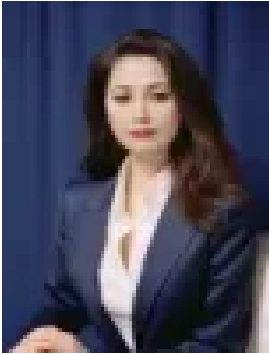
608/538 Canterbury Road, Campsie, NSW, 2194

Bedrooms: 2

Bathrooms: 2

Parkings: 1

Type: Apartment



Vanessa Kim
0297632277

QUIET ENTER VIA ELIZABETH ST WITH CITY VIEWS

This apartment features a superb layout quality architecture, fixtures and features including tiled floors to living areas and floor to ceiling glazed doors that help to bring the outside in. It has been thoughtfully planned, with a focus on functionality in its design. Considerate of its aspect and natural light and a considered balance of indoor and outdoor space, efficient layout and storage.

Features include:

- Spacious interiors 2 bedrooms, high ceilings and timber inspired tiled flooring throughout living areas
- Quiet location at the back of the apartment
- Open-plan living and dining areas flow to entertainer's balcony
- Gourmet kitchen with stone bench-tops and stainless-steel gas appliances
- Ducted air-conditioning, video intercom, blinds throughout
- Level lift access to secure lobby & basement parking
- 1 car space in remote-controlled basement plus separate storage area
- On transport and Clemton Park Shopping centre within walking distance

Property outgoings:

Strata levy: \$950.32p/q

Council rate: \$408p/q

Water rate: \$277.21p/q

Total: 103sqm, Internal: 78sqm, Balcony: 9sqm, Car: 14sqm, Storage: 2sqm

Disclaimer: We have in preparing this document, used our best endeavours to ensure that all the information contained in this document is true and accurate, but accept no responsibility and disclaim all liability in respect of any errors, omissions, inaccuracies or misstatements contained in this document.