

**65A The Esplanade, Cronulla, NSW 2230**



**Apartment For Sale**

Wednesday, 7 February 2024

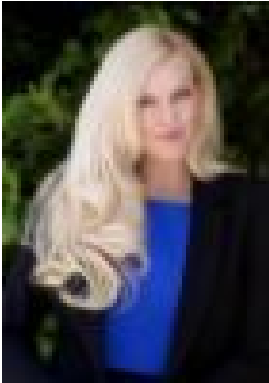
65A The Esplanade, Cronulla, NSW 2230

**Bedrooms: 4**

**Bathrooms: 2**

**Parkings: 4**

**Type: Apartment**



Monique Napper  
0423491538

## Expressions of Interest - 5th April 2024 by 11am

Positioned on the pristine beachfront of Cronulla NSW, this full floor residence is the pinnacle of luxury beachside living. Designed to embrace the ultimate Australian beach culture of golden mornings and balmy summer nights "SEA" is the perfect opportunity for individuals looking to escape from it all. The Coastal haven of "SEA" boasts a spectacular entertainer's layout that seamlessly captures the world-class views - Envious absolute beachfront location with north-east facing aspect bathing in natural sunlight year-round - Floor-to-ceiling windows flow onto an entertainer's deck with direct access to The Esplanade, crystal blue waters of Shelley Beach and ocean swimming pool - Gourmet kitchen featuring Sub Zero and Wolf appliances, marble bench tops, zip top and glass wine cellar - Impeccable master retreat includes luxurious ensuite and walk-in robe fitted with motorised curtains - Two additional bedrooms, home office and fourth bedroom/media room with private terrace - Timber floorboards, feature v-joint finishes throughout, sun-drenched living and Mediterranean inspired interiors - Individual private lift access and full-floor basement parking for up to four cars plus home gym and an abundance of storage throughout - Stunning bespoke features and impeccable fixtures throughout create the grandest offering on the coast of NSW - Ideally positioned within walking distance to schools, restaurants, cafes, transport, parks, clubs and amenities Proudly developed by well renowned multi award winning "Sammut Group" this flawless residence sets a new benchmark for beachside living. Contact Monique Napper for further information.