

802/8 Hollingworth Street, Port Macquarie, NSW,
2444



Apartment For Sale

Thursday, 28 November 2024

802/8 Hollingworth Street, Port Macquarie, NSW, 2444

Bedrooms: 3

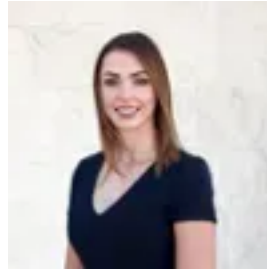
Bathrooms: 2

Parkings: 1

Type: Apartment



Naomi Hunter
0265837733



Kody Graham

Unbeatable CBD Apartment Opportunity

Have you dreamt of living in a north east facing, penthouse apartment that has 290 degree views and is within a short stroll the CBD, waterways, entertainment venues and eateries? If you have, then dream no more as apartment 802 in the iconic, Sundial apartment complex is on the market.

Boasting sundrenched interiors and an amazing view, this wonderful property is available to move into straight away. Capitalize on this fantastic location and renovate to a modern standard or occupy now and start enjoying the amazing lifestyle that is on offer.

The spacious lounge and dining area takes full advantage of the water and townscape vista and opens onto the wrap around balcony. The original kitchen has views all the way to Transit Hill, Bago Bluff and beyond and has a built in breakfast bar so that you can sit and enjoy the views every morning.

The large master suite faces north, capturing the morning sun and offers an amazing water view to wake up to. It features a WIR plus a luxe, renovated ensuite with a free standing bath, large vanity and floor to ceiling tiles.

Bedrooms two and three will both accommodate a double bed, have built in robes and are serviced by an original bathroom with a separate WC.

There is also a storage cage and an allocated parking space in the security basement. A pool in the complex caters for those that don't want to take the short walk to Town Beach.

This is without a doubt one of the best chances you will ever have to secure a penthouse apartment that is so spacious and offers so much. We just love this property and know you will too and we even have a Strata report on hand to make it easier for you to secure this one off apartment. Contact Naomi and Kody for more information and inspection times.