

9/281A Edgecliff Road, Woollahra, NSW 2025

Apartment For Rent

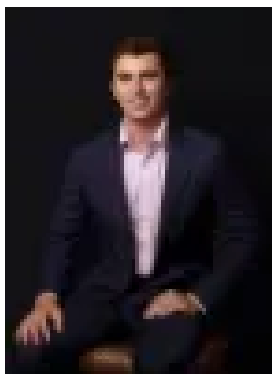
Thursday, 9 January 2025

9/281A Edgecliff Road, Woollahra, NSW 2025

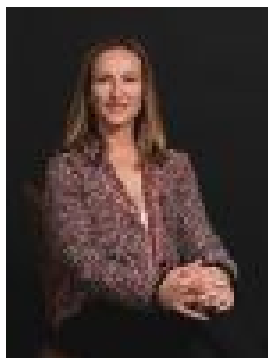
Bedrooms: 2

Bathrooms: 1

Type: Apartment



Alexander Constantine
0293277404



Helena Colnaric
0418808778

\$1,000 per week

Peacefully positioned in a small boutique block of just 12, this delightful strata apartment enjoys an enviable lifestyle of peace and unparalleled convenience. Offering a functional and spacious 78sqm approx. floorplan, the property features a large combined lounge and dining room, a renovated gas kitchen, contemporary bathroom, polished timber floors and air conditioning. Accommodation comprises 2 generous bedrooms plus a versatile sunroom/ study/ work from home space which boasts direct access to the lovely rear garden. With no common walls, traditional Art Deco details, high ceilings and polished timber floors throughout, the property is positioned less than 400m Queen Street village. Enjoying close proximity to the Edgecliff Centre & Double Bay, this keenly-sought address is also just short stroll to Westfield Bondi Junction, train station and bus interchange. Features -- Combined lounge & dining room- Gas kitchen with marble benches- 2 generous bedrooms with built-ins- Versatile sunroom/ study/ home office- Second workspace/ study nook in kitchen- Direct access to sunny common garden- Sleek & contemporary full bathroom- Concealed internal laundry facilities- Character Art Deco block of 12 units- Security block with intercom entry- Walk to Queen Street & transport- Close to Westfield Bondi Junction