

9/432 Liverpool Rd, Strathfield South, NSW, 2136



Apartment For Sale

Wednesday, 8 January 2025

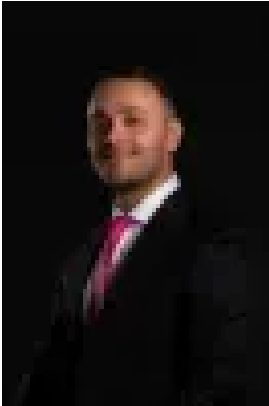
9/432 Liverpool Rd, Strathfield South, NSW, 2136

Bedrooms: 2

Bathrooms: 2

Parkings: 1

Type: Apartment



Elie Semrani
0297632277

Stylish North-Facing Apartment in Boutique Block

Set in a peaceful boutique complex offering a desired low maintenance lifestyle, this impeccably maintained two-bedroom apartment presents an exceptional opportunity ideal for the first home buyer, young family or savvy investor. Presenting a spacious open and light filled floor plan, there is an effortless flow from indoors to out with quality appointments throughout ready to move straight in and enjoy. Situated only moments away from beautiful parks, highly regarded schools, shopping facilities, public bus and train station, the property's central location offers unparalleled access to all the amenities you need.

Features include:

- Sundrenched 2-bed apartment in a peaceful boutique block
- Open plan indoor/outdoor living area with floor-to-ceiling glass doors
- North facing entertainers balcony with adjustable privacy shade
- Stylish kitchen with gas cooking, breakfast bar and stainless-steel appliances
- Two good-sized bedrooms with built ins, main with ensuite and balcony access
- Modern bathroom, split system air conditioning, downlights, cool toned neutral decor throughout
- Neatly presented with quality tiled floorboards and ready to move in immediately
- One secure basement car space with storage cage
- Lift access, security video intercom
- Easy access to public transportations, shops, Henley Park, Enfield Aquatic Centre, Strathfield Plaza, Burwood Westfields and a selection of highly sought after schools

Disclaimer: We have in preparing this document, used our best endeavours to ensure that all the information contained in this document is true and accurate, but accept no responsibility and disclaim all liability in respect of any errors, omissions, inaccuracies or misstatements contained in this document.