

Address available on request, Highett, Vic 3190

Apartment For Sale

Tuesday, 7 January 2025



Address available on request, Highett, Vic 3190

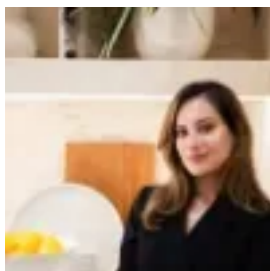
Bedrooms: 2

Bathrooms: 2

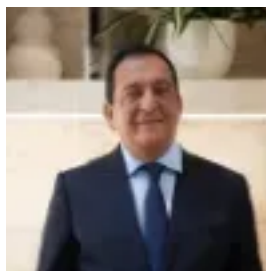
Parkings: 2

Area: 86 m2

Type: Apartment



Simran Sablok
0386455561



Raj Sablok

\$683,800

An off-the-plan 2 Bedroom, 2 Bathroom, and 2 Carparks apartment in Highett. Apartment Details:- South facing and on Level 1- 78 sqm Internal area and 8.1 sqm External area- Well planned and spacious layout comprising elegant spaces for a kitchenette, living, and dining areas. - Private Balcony and Storage included. - Timber flooring in living areas and bosch appliances. Features include: *2 minutes' walk to train station *Close to Southland Westfield and central park * Enriched surrounding amenities including shops, retails, gyms, parks, renowned schools and so much more. *Unique triple glazed french window throughout *Top brand central heating/cooling with zone control * Built-In Wardrobes * Euro style stainless appliances in kitchen * Timber floor in living area * Full scaled French windows * Secure Parking * Smartphone app supported electrical and appliances. * Affordable body corp. Ideal for First Home Buyers, Owner Occupiers and Savvy Investors. Please contact Simran on 0474778400 or Raj on 0434477122 to book an inspection or for more information. *It is to be noted that all images are artistic Impressions. Please refer to the floorplan for the actual apartment. *