

Address available on request, Highett, Vic 3190

Apartment For Sale

Tuesday, 7 January 2025



Address available on request, Highett, Vic 3190

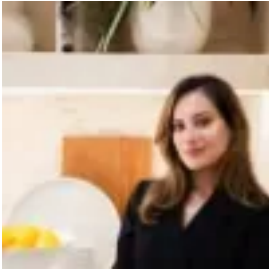
Bedrooms: 2

Bathrooms: 2

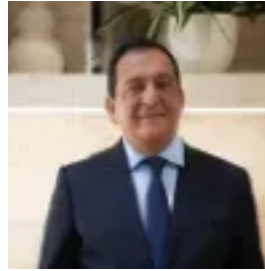
Parkings: 1

Area: 107 m2

Type: Apartment



Simran Sablok
0386455561



Raj Sablok

\$638,800

Arrange an inspection today. Nestled in an exclusive cluster, this ground-level apartment offers a perfect blend of convenience and comfort. With 2 bedrooms, 2 bathrooms, 1 carpark, and a storage unit, the internal area spans 69.9 square meters, providing ample space for a cozy lifestyle. Entertain in style in your private courtyard, boasting a generous 37.4 square meters, where residents can bask in the sunlight or entertain guests with ease. The elegant design and high-quality finishes throughout create a welcoming ambiance, making it an ideal home for those seeking both style and functionality. Located just a short walk from the lively Highett Road village and shopping center, residents of Neue Apartments enjoy the convenience of a bustling local community. Whether it's a quick trip to the nearby shops or a leisurely stroll to a local cafe, everything is easily accessible, making Neue a prime choice for those seeking a sophisticated urban lifestyle with all the amenities at their fingertips. Features include: * 2 minutes' walk to train station * Close to Southland Westfield and central park * Enriched surrounding amenities including shops, retails, gyms, parks, renowned schools and so much more. * Unique triple glazed french window throughout * Top brand central heating/cooling with zone control * Built-In Wardrobes * Euro style stainless appliances in kitchen * Timber floor in living area * Full scaled French windows * Secure Parking * Smartphone app supported electrical and appliances. * Affordable body corp. Please contact Simran on 0474778400 or Raj on 0434477122 to book an inspection or for more information. *It is to be noted that all images are artistic Impressions. Please refer to the floorplan for the actual apartment. *