

C212/90-98 Glenmore Ridge Dr, Glenmore Park, NSW 2745

Apartment For Rent

Thursday, 9 January 2025

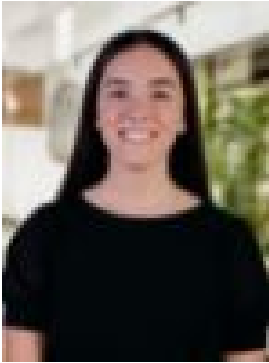
C212/90-98 Glenmore Ridge Dr, Glenmore Park, NSW 2745

Bedrooms: 2

Bathrooms: 2

Parkings: 1

Type: Apartment



Gabrielle Gattellari
0429915486



Lauren Woodfield
0448597596

\$660 per week

Glenmore Village will transform the local scene and embrace a sense of contemporary design, comfort and style. Escape the daily grind and indulge in our lush landscapes and spacious apartments. Be a part of the vibrant ground-floor retail centre or escape to the sanctuary of the landscaped garden terrace above. Exclusive to the residents of Glenmore Village, this leafy retreat will form an integral part of the quality of life this unique development has to offer. Glenmore Village is a connected urban community of dining destinations, shopping & entertainment, fitness & beauty services and medical care, all at your doorstep. This luxury apartment will be available soon for lease and offers:- Two bedrooms - Built in robes and ensuite to main bedroom - Ducted air conditioning - Private balcony overlooking Nangamay Public School - Study nook - Internal laundry with clothes dryer - Modern kitchen with gas cooking and a dishwasher. Located in Glenmore Park, in the rapidly expanding Mulgoa Rise precinct, Glenmore Village is the long-anticipated crowning jewel of this exclusive housing area. **these photos are not an exact representation of the property and provide guides to its colour schemes and fixtures and fittings only** Disclaimer: We have been furnished with the above information, however, PRD Penrith gives no guarantees, undertakings or warnings concerning the accuracy, completeness or up-to-date nature of the information provided. All interested parties are responsible for their own independent enquiries in order to determine whether or not this information is in fact accurate