

2/13 Greville Street, Chatswood, NSW, 2067

LJ Hooker

Duplex Semi-detached For Sale

Wednesday, 18 December 2024

2/13 Greville Street, Chatswood, NSW, 2067

Bedrooms: 4

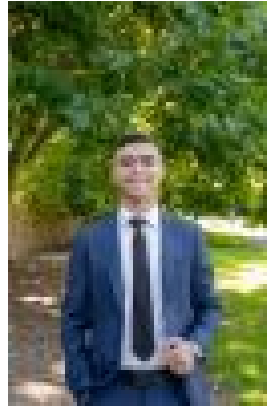
Bathrooms: 2

Parkings: 2

Type: Duplex Semi-detached



Yianni Karakikes



Joshua Alha

Designer family sanctuary in a quiet and leafy lifestyle pocket

Architecturally designed and meticulously crafted from the finest natural materials, this brand new residence is a remarkable showcase of high-end living complete with alfresco breakout zones and a magical garden sanctuary. The sought-after cul-de-sac address is steps to buses bound for Chatswood CBD.

- 📍 Masterfully designed by leading firm Kreis Grennan Architecture
- 📍 Engineered oak floors, soaring skylight ceilings, crisp interiors
- 📍 Bright and spacious open plan living/dining, formal family lounge
- 📍 Private courtyard, garden patio, sprawling backyard with fire pit
- 📍 Deluxe stone kitchen offers Miele appliances and butler's pantry
- 📍 Plush bedrooms appointed with custom built-ins and study desks
- 📍 Top floor parents' retreat offers primary suite and home office
- 📍 Lavish bathrooms appointed with rainfall showers and brass tapware
- 📍 Ducted zoned air con, internal laundry, intercom, lock-up garage
- 📍 Falls into catchments for Mowbray Public and Chatswood High School

Contact LJ Hooker Dulwich Hill for further information or to arrange an inspection

Yianni Karakikes
0452 230 393
yianni@ljhookerdulwichhill.com.au

Joshua Alha
0499 710 720
joshua@ljhookerdulwichhill.com.au