

10 Ferry Avenue, Plympton Park, SA, 5038

NOAKES
NICKOLAS

House For Sale

Thursday, 24 October 2024

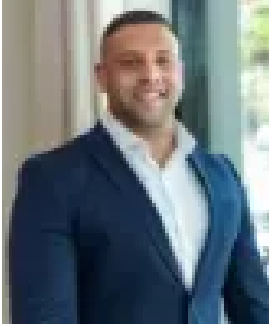
10 Ferry Avenue, Plympton Park, SA, 5038

Bedrooms: 3

Bathrooms: 2

Parkings: 2

Type: House



Jorden Tresidder
0881663989

Complete contemporary living with Plympton Oval on its doorstep.

Auction 9/11 at 9am - (Unless Sold Prior).

Embracing its ultra-convenient city to coast locale, this contemporary home is infused with natural light and modern style whilst delivering every local amenity to its doorstep.

Floating floors take you from the immaculate streetscape through a versatile open living space, before a three-bedroom wing begins with a master adjoining ensuite and walk-in robe, and a fully tiled main bathroom with family-friendly bath service the remaining two.

Quality stainless-steel appliances of the white gloss kitchen beautifully contrast against the warm floors and verdant green gardens, met in the middle by relaxed open plan living and an aggregate underroof alfresco both perfect spaces to entertain guests or enjoy quiet moments to yourself.

Conveniently located right across the road from Plympton Oval playground, whilst both a bus and tram stop rest at either end of your street, you're primed for an effortless and enjoyable life between city and coast from Ferry Avenue.

Features:

- Secure garage with internal access
- Dual living zones
- Built-in robes to bedrooms 2 & 3
- Floor-to-ceiling tiled bathrooms
- Gas cooktop, dual ovens & Asko dishwasher
- Walk-in pantry
- Ducted cooling, heating, S/S air conditioning & ceiling fans
- 21-panel solar system

Lifestyle:

- A few footsteps from Plympton Oval, bus & tram stops
- 5-minutes from Jetty Road, Castle Plaza & Westfield Marion
- Zoned for reputable Plympton International College, proximity to Emmaus Christian College, Immanuel College, Forbes & Plympton Primary
- Just 10-minutes from the CBD

Rates:

- Council \$1960PA
- SA Water \$198PQ
- ES Levy \$161PA
- City of Marion
- Torrens Title
- 2019

Disclaimer at noakesnickolas.com.au | RLA 315571