

103 Gordon Avenue, Hamilton South, NSW, 2303



House For Sale

Tuesday, 7 January 2025

103 Gordon Avenue, Hamilton South, NSW, 2303

Bedrooms: 3

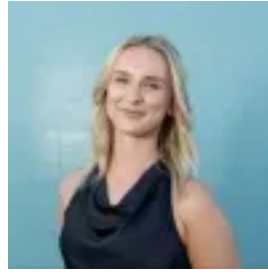
Bathrooms: 1

Parkings: 3

Type: House



Lyndall Allan
0439761123



Tahnee Burke
0432333753

Classic charm with modern potential in superb family-friendly area

Auction Location: In Room

Brimming with the timeless character of its 1930s origins, this charming brick-and-tile home is a treasure trove of classic features. From stunning leadlight windows to tall ornate plaster ceilings and polished timber floors, every detail exudes warmth and elegance. Lovingly cared for, this classic gem is ready to welcome its next family to create lasting memories.

Inside, you'll find three bedrooms, two separate living areas, a kitchen/meals space, and a sunroom all offering plenty of room for a growing family. Set on a generous 639.9sqm block, there's ample potential to extend into the backyard, add a deck, or even consider a pool (STCA). With its fresh presentation, you can move straight in and enjoy the home as it is, while dreaming up modern touches to make it your own.

Perfectly positioned in a central location, you're just moments from the vibrant cafes, restaurants, and shopping hubs of The Junction and Beaumont Street. Stroll to nearby primary and high schools or take the kids to Learmonth Park for sports and playtime. And with Bar Beach and Merewether Beach only five minutes away, morning surf sessions or lazy beach days are always within easy reach.

- Classic period brick/tile home on level 639.9sqm block
- Stunning lounge room with north facing bay window, ornate ceiling and French doors opening to verandah
- Second living area with ornate brick fireplace
- Full size main bathroom with bath and shower plus handy second w/c
- Three classically proportioned bedrooms plus versatile sunroom
- Carport at front door plus 7.5m x 9m garage/shed
- Zoned Hamilton South Public school and Newcastle High, moments to St Francis Xavier's College and St Joseph's Primary
- 1km to Marketown, 1.7km to Newcastle Interchange

Disclaimer: We have obtained this property information from sources we believe to be reliable; however, we cannot guarantee its accuracy. Prospective buyers are advised to carry out their own investigations.