

106 Oxley Road, Chelmer, Qld 4068



House For Sale

Tuesday, 7 January 2025

106 Oxley Road, Chelmer, Qld 4068

Bedrooms: 5

Bathrooms: 2

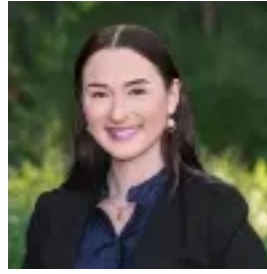
Parkings: 2

Area: 405 m2

Type: House



Douglas May
0410488110



Shakimra Gordon
0459453380

Auction

Hunter & Scout Auction Event 4:00pm Wednesday 5th February 2025 Go To:

<https://raywhitesherwood.com.au/watch-our-auctions-live> A harmonious blend of classic character and contemporary sophistication, this five-bedroom family residence offers the perfect balance of luxury and practicality in one of Chelmer's most sought-after riverside locations. Impeccably designed for modern family living, this home features multiple living zones, a recently extended entertainer's deck, a sparkling solar-heated mineral pool and private European-inspired sauna.

Key Features:

- The home has five spacious bedrooms, with the master suite on the ground floor, featuring double walk-in robes and a luxurious ensuite.
- Multiple living areas including a family room, second living space, and a rumpus/office.
- The gourmet kitchen boasts an oversized island, high-end appliances, and plenty of natural light.
- French doors lead to large decks on both floors, with an outdoor kitchen for entertaining on the ground floor.
- The modern lower level features polished concrete floors and is ideal for a playroom, gym, or office.
- There are two full bathrooms and a powder room, with the main bathroom offering dual vanities and a relaxing bath.
- The solar-heated mineral pool and sauna, along with ample storage including a workshop, double carport, garden shed, and extensive internal storage.
- The home is energy-efficient with an EV charger, solar panels, and LED lighting.

Situated in one of Chelmer's most desirable riverside precincts, this property offers unrivaled convenience and lifestyle. Residents will enjoy close proximity to beautiful parks, playgrounds, and sports fields, with the riverfront only a short stroll away. The home is within the catchment area for Graceville State School and Indooroopilly State High School, and is also close to childcare services, bus stops, Chelmer train station, and a variety of local cafes and restaurants. Indooroopilly Shopping Centre is just 5 minutes away, and the Brisbane CBD is easily accessible, only 20 minutes by car.

DISCLAIMER: Whilst all care has been taken to ensure that the information provided herein is correct, we do not take responsibility for any inaccuracies. Accordingly, we recommend that all interested parties should make their own enquiries and due diligence to verify the information. Any personal information provided to Cameron Crouch Property T/As Ray White Sherwood, will come under the terms set out in our Privacy Policy, which can be found here for your convenience: <https://www.raywhite.com/privacy>.