

11 Ferndell Street, The Ponds, NSW, 2769



House For Sale

Tuesday, 26 November 2024

11 Ferndell Street, The Ponds, NSW, 2769

Bedrooms: 5

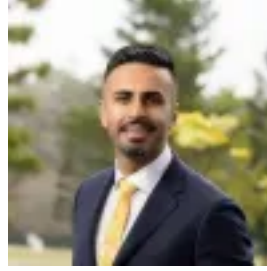
Bathrooms: 3

Parkings: 2

Type: House



Sukhbir Sidhu
0286105950



Zain Tariq

STUNNING CUSTOM HOME

Sukhbir & Zain from Ray White Kellyville Ridge Presents : This impressive two level home welcomes with generous dimensions, quality finishes and a verdant leafy backdrop creating a wonderful sense of privacy. Graced with an appealing classic facade, step inside to spacious living & dining spaces matched with a sun drenched alfresco and sizeable level lawns for children to play. An ideal choice for growing families, the home features an abundance of space and is ready for immediate enjoyment Walking to Tallawong Metro Station and situated within a short distance to schools, shops and parks, this home will delight buyers.

INCLUDED Brand New tiling 1200x600 downstairs floor plan and rooms give a comfy brand new carpet finish

This immaculate home features:

- ~ Five Spacious bedrooms
- ~ Three NEW Designer featured custom bathrooms
- ~ Double blinds through out all windows with ceiling fans in all areas and bedrooms
- ~ King Size master bedroom with proper functional his/her master bedroom wardrobes.
- ~ Bedroom downstairs with full bathroom
- ~ Dedicated FORMAL lounge
- ~ Designated home office space
- ~ Large open plan dining and living area
- ~ High end spec pendant lights in the dining area
- ~ Heated Towel Rails and motorised roller blinds
- ~ Fully renovated designer kitchen design with Gourmet kitchen with stone bench-top, quality appliances, quality new buffet, new butlers pantry and hugh end appliances
- ~ Well designed covered Alfresco
- ~ Solar System for energy effecient lifestyle.
- ~ Smart light system and front door electronic system
- ~ Multi zoned ducted reverse cycle air conditioning
- ~ Double auto garage with plenty of storage

Location Highlights:

- ~ School Catchment of Riverbank public & The Ponds High School
- ~ 2 Minutes (APPROX) drive to The Ponds Shopping Village
- ~ 5 Minutes(approx) drive to Stanhope Shopping Village and Rouse Hill Town Centre
- ~ 3 Minutes walk (approx) to the Tallawong metro station

We highly recommend you visit this masterpiece. For more information, please contact us at Ray White Kellyville Ridge. In light of the recent lifting of restrictions on open homes, we ask that if you wish to visit one of our properties that you adhere to the health guidelines issued by the NSW Government. Please remain home if you are feeling unwell, minimise contact, and maintain 1.5m physical distancing inside and outside the property. As we work through this process, we kindly ask you to be patient during an inspection and follow the advice of the agent.

Disclaimer:

All information contained herein is gathered from sources we believe to be reliable. However, we cannot guarantee its accuracy. We do not accept any responsibility for its accuracy and do no more than pass it on. Any interested persons should rely on their own inquiries