

11 Pawleena Rd, Sorell, Tas 7172

PETERSWALD
for property

House For Rent

Wednesday, 8 January 2025

11 Pawleena Rd, Sorell, Tas 7172

Bedrooms: 3

Bathrooms: 1

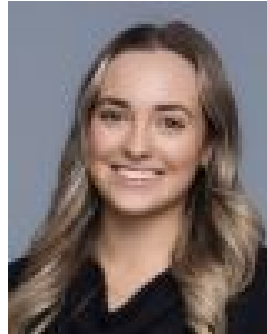
Parkings: 6

Area: 1521 m2

Type: House



Dani Shields
0362247090



Paige MeaghanSmith
0362247090

\$520 per week

Discover the charm of 11 Pawleena Road, Sorell – a beautifully presented 3-bedroom, 1-bathroom brick home on a generous 1521m² block. This property combines comfort, practicality, and convenience for the perfect family lifestyle. Property features:- 3 spacious double bedrooms, all with built-in wardrobes- Timber kitchen with ample storage, generous bench space- Dishwasher- Adjoining, open plan family/dining area- Sunlit formal lounge with reverse cycle air conditioning and wood heating- Separate bathroom with bath, shower, and vanity unit- Separate laundry with direct access to the rear yard- Separate toilet- Town water and sewerage- Drive-through double garage and ample off-street parking- Expansive rear yard with garden shed, raised vegetable beds, and utility area- Space for additional parking for caravans or boats About the area:- Located in the heart of Sorell, within walking distance to shopping centres and amenities- Easy access to beautiful beaches, golf courses, and recreational facilities- Just 25 minutes to Hobart CBD via the Tasman Highway, ensuring an easy commute Terms of tenancy: Available: Now Pet Policy: Pets considered upon application Inspection: By appointment only, please register upon enquiry.