

12/1 Browne Parade, Warwick Farm, NSW, 2170



House For Sale

Tuesday, 19 November 2024

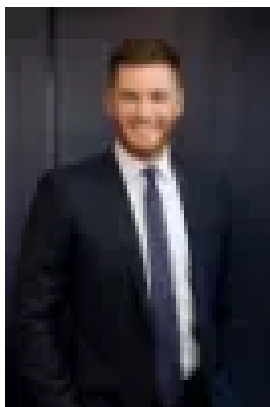
12/1 Browne Parade, Warwick Farm, NSW, 2170

Bedrooms: 2

Bathrooms: 2

Parkings: 1

Type: House



Blaz Dejanovic
0287118879

Large Two Bedroom Unit

Why You'll Love it;

Situated on the third floor of a highly secure complex is this spacious 2-bedroom unit. Awarding a large bedroom with a massive walk-in wardrobe and balcony access, this home boasts an open plan lounge and dining area, providing ample space for relaxing and entertaining guests.

The kitchen is equipped with modern stone tops and gas cooking, making meal preparation an absolute breeze. The bathroom is beautifully designed with floor-to-ceiling tiles, a shower and bathtub, and the added convenience of an internal laundry. With high ceilings, air-conditioning, and downlights throughout, this unit is sure to provide comfort and style all year round.

Featuring two large balconies, you can enjoy an abundance of natural sunlight while taking in the stunning views.

The striking apartment also comes complete with a lock-up garage and additional storage space, providing the ultimate peace of mind. Located just across from the newly expanded Bonnyrigg Plaza and within easy walking distance to the T-way, this beautiful top unit is perfectly positioned for all your shopping and commuting needs. Don't miss out on this incredible opportunity to make this stunning unit your new home or investment.

Featuring:

- 2 Beds | 2 Baths | 1 Car Space
- Large bedroom, main with built-in robe and balcony
- King sized master bedroom with modern ensuite and courtyard
- Bathroom features floor to ceiling tiles and a bathtub
- Downlights, Air-conditioning, and carpet flooring throughout
- Kitchen with modern stainless-steel appliances with gas cook top
- Open plan living and dining area with large balcony providing indoor / outdoor living
- Underground car park with visitor parking & storage cage
- Moments drive/walk to all amenities in Liverpool CBD

Rental: \$530 per week

Lease Expiry: June 2025

Council Rates: \$ per quarter (approx.)

Water Rates: \$ per quarter (approx.)

Strata levies \$1,546 per quarter (approx.)

This property is best suited for the Savvy investor seeking to receive great rental return in a prime and upcoming suburb, first home buyers and downsizers.