

136 King Street, Westbury, TAS, 7303



House For Sale

Friday, 15 November 2024

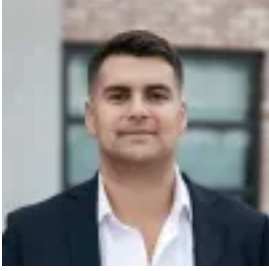
136 King Street, Westbury, TAS, 7303

Bedrooms: 3

Bathrooms: 1

Parkings: 3

Type: House



Josh Schaeche

0448901661

1930s Character Home Meets Modern Comfort!

Welcome to this charming 1930s character home on a generous 2668sqm block in the tranquil township of Westbury. Blending heritage allure with modern comforts, this property invites families and those seeking an idyllic lifestyle. The beautifully landscaped front yard creates a welcoming approach to the classic verandah, setting a serene atmosphere as you take in the peaceful surroundings.

Inside, the home features three generously sized bedrooms, each thoughtfully refreshed to maximise light and space, with high ceilings enhancing the sense of comfort. A central bathroom with a shower, bathtub and separate toilet serves the home, offering convenience for busy households.

The modern kitchen is equipped with ample bench space, plentiful storage and stainless steel appliances. Just outside, a private deck makes the perfect spot to enjoy your morning coffee. Flowing into the main living and dining area, this space boasts polished spotted gum hardwood floors, rich timber accents and two classic working fireplaces, including a third work fireplace that adjoins the front bedroom. This area is ideal for family gatherings or relaxing nights in, and it extends out to an undercover deck, ideal for dining or entertaining year round.

The thoughtful floorplan also includes a study nook, an additional study or sitting room and a versatile rumpus room doubling as a laundry area, meeting various family needs.

Outside, the property continues to delight with a spacious level yard and a back paddock offering endless potential for gardening, pets, a hobby farm or even the potential to subdivide with council approval. A gardener's paradise, the grounds include cottage style gardens with heirloom roses, vibrant flowers and a newly planted peony garden. Seasonal favourites like tulips, daffodils and hydrangeas add colour throughout summer, while a large, fenced vegetable garden and a chook house with a secure run cater to those with a green thumb.

Practical outbuildings include a 12m x 6m shed/workshop with a partially lined interior and mezzanine storage, a separate outside toilet, a single garage and a vintage storage shed.

Westbury offers a peaceful lifestyle with essential amenities nearby, and with Launceston only a 25 minute drive away, this home provides semi rural tranquility without sacrificing city conveniences.

This property is more than a home, it's an opportunity to embrace a lifestyle of comfort, character and to be a part of a welcoming community.