

# 14 Robert Close, Rutherford, NSW, 2320

Thompson,  
Clarke

## House For Sale

Tuesday, 7 January 2025

14 Robert Close, Rutherford, NSW, 2320

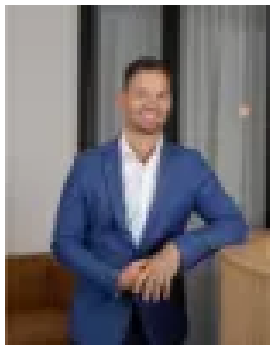
Bedrooms: 3

Bathrooms: 1

Parkings: 4

Area: 743 m<sup>2</sup>

Type: House



Ryan Clarke

## Ultimate Family Home!

Discover the perfect family home, offering a seamless blend of comfort, space, and functionality. Situated on a generous 743m<sup>2</sup> block, this charming brick residence boasts three well-sized bedrooms and a central bathroom designed for practicality. The heart of the home is the open-plan kitchen, living, and dining area, creating a welcoming space for family gatherings and entertaining. A standout feature is the expansive rumpus room, complete with a built-in bar, ideal for hosting or relaxing in style.

With ample parking options, including a two-car garage and an additional two-car carport, this property is perfectly equipped for families or hobbyists in need of extra storage.

### Property Features:

- Solar System
- Ceiling fans throughout
- Downlights
- Split System Air Conditioning
- Bedrooms with built ins
- Tiled under cover Alfresco
- Floor boards throughout
- Well sized backyard

Embrace a lifestyle of convenience and possibility in this versatile home.

### Disclaimer:

Information contained on any marketing material, website or other portal should not be relied upon and you should make your own enquiries and seek your own independent advice with respect to any property advertised or the information about the property.