

16 Chickasaw Crescent, Greenfield Park, NSW, 2176



House For Sale

Monday, 20 January 2025

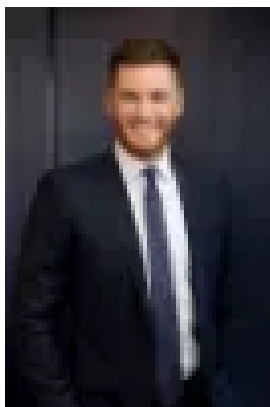
16 Chickasaw Crescent, Greenfield Park, NSW, 2176

Bedrooms: 5

Bathrooms: 2

Parkings: 2

Type: House



Blaz Dejanovic
0287118879

Open Homes | Thu & Sat

Why you'll love it:

A sleek haven delivering all the hallmarks of lifestyle perfection in the exclusive location within Greenfield Park, this stunning contemporary residence seamlessly blends high-end elegance and sophistication.

Designed for grand-scale living and family entertaining, it boasts an intuitive floorplan, spacious sun-kissed interiors framed by broad windows, and a delightfully private, landscaped yard. This is lifestyle without limits - Welcome to 16 Chickasaw Crescent.

With every inch of detail considered, the home has been transformed to modern luxury. With nothing more to do but move-in and enjoy.

Features included:

- Five generously sized bedrooms
- Two full bathrooms, meticulously designed combined with the highest quality fixtures and fittings
- Large open-plan living spaces
- Stunning level of attention to detail, with every inch thoughtfully designed
- Masterful kitchen with 900mm gas cooktop, integrated dishwasher, and high-quality appliances
- Ducted aircon and downlights throughout
- Oversized alfresco area flowing seamlessly onto flat well-manicured lawn
- Hybrid floorboards throughout
- Outdoor kitchen complimented by large outdoor alfresco
- Solar panels with 10Kw Battery
- Large flat 586sqm block with potential for granny flat or pool (STCA)
- Further inclusions: Security shutters & camera system, Smart system Samsung digital electronic door lock, solar panels, outdoor shed, amazingly unique cabinetry throughout the home complimented by feature lighting

Ultra-convenient location, short distance to all local amenities, schools, shops local parks and places of worship.

Perfectly suited for:

Buyers with an eye for detail, the growing or established family that has an affinity for entertaining guests and luxury lifestyle living. The opportune turn-key home in one of the most suitable pockets of Southwest Sydney.

Disclaimer: The above information has been gathered from sources that we believe are reliable. However, we cannot guarantee the accuracy of this information and nor do we accept responsibility for its accuracy. Any interested parties should rely on their own enquiries and judgment to determine the accuracy of this information for their own purposes. Images are for illustrative and design purposes only and do not represent the final product