

# 17 Pearce Street, Double Bay, NSW 2028

PPD REAL ESTATE

## House For Sale

Friday, 17 January 2025

17 Pearce Street, Double Bay, NSW 2028

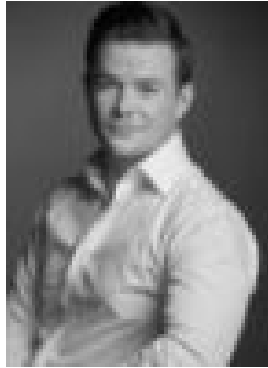
**Bedrooms: 4**

**Bathrooms: 3**

**Type: House**



Alexander Phillips  
0283551117



Gavin Lewis  
0405563115



Sean Poche  
0283551136

## Auction 15 February

The Essence Of Quiet Luxury In An Idyllic Harbourside Setting, Footsteps To Double Bay Beach Sitting pretty in a landmark row, this two-storey terrace holds a coveted harbourside setting in a tightly held cul-de-sac just footsteps to the beach and a level 450m to the heart of Double Bay village. A tasteful redesign takes cues from Parisian style with its elegant interiors and refined material palette with finishes in French Oak and Carrara marble achieving a unified feel that underscores a feeling of calm. Featuring a striking double-height void bringing northerly light into the heart of the home, the four-bedroom residence embodies classic contemporary luxury but it's the peaceful harbourside location that makes the home so special. Part of a family friendly community where kids still play on the street, Pearce Street is famous for its banks of jacarandas that create a spectacular display in spring while a private landscaped courtyard garden opens out to Sherbrook Avenue and Woollahra Preschool. Enjoy the best of harbour living and village convenience with the beach at the end of the street and just 500m along the foreshore to the ferry wharf or up to the French-esque Redleaf Pool.\* Secure forecourt, corbelled arch hallway\* French Oak floorboards and high ceilings\* 4 bedrooms, 4th bed or lounge/office\* 2 ensuite bedrooms on the upper level\* Custom built-in robes and window seat\* Dining room with double-height ceilings\* Carrara marble kitchen, Shaker joinery\* Smeg Victorian dual fuel range cooker\* Integrated dishwasher, silver hardware\* Skylit living with lofty vaulted ceilings\* Bi-fold doors to a gorgeous courtyard\* Tranquil leafy outlook, barbecue terrace\* 3 beautiful Euro-appointed bathrooms\* Carrara marble finishes, quality tapware\* Extensive custom joinery, attic storage\* Reverse cycle air, louvered windows\* Rear access to child-friendly Sherbrooke Ave\* Level 400m to Double Bay Public School\* Walk to the 18 Footers and ferry wharf\* 600m to Kiaora Lane's cafe/dining hub\* 650m to Margaret, Song Bird and Bibo