

# 18 Riding Way, Craighburn Farm, SA, 5051

## House For Sale

Wednesday, 13 November 2024

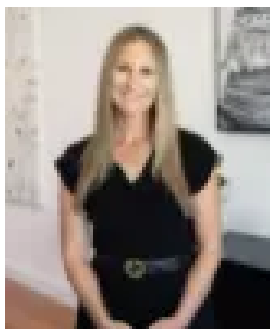
18 Riding Way, Craighburn Farm, SA, 5051

**Bedrooms: 4**

**Bathrooms: 2**

**Parkings: 2**

**Type: House**



Sharee Redic

## A Luxury Retreat in the Adelaide Hills

Best Offers By Tues 3rd Dec @ 12pm (USP)

Tucked away in the tranquil, tree-lined cul-de-sac of Craighburn Farm, 18 Riding Way presents an exceptional blend of elegance and comfort. This distinguished four-bedroom residence, thoughtfully crafted and lovingly maintained by its original owner, offers a living experience that is both intimate and grand. Upon entry, an open-concept design unfolds, effortlessly merging two expansive living areas to create abundant space for relaxation and refined entertaining. The gourmet kitchen, adorned with premium Smeg appliances, gas cooking, and a generous butler's pantry, is a culinary masterpiece waiting to inspire.

Sunlit interiors bathe the home in a warm and inviting glow, while the ground floor retreat offers a peaceful sanctuary—ideal for a private office or a cozy reading nook.

Ascending to the upper level, you'll find the vast primary suite, a true haven of luxury featuring a walk-through robe and an expansive ensuite. Two additional spacious bedrooms feature walk-in robes, while a fourth bedroom encompasses built-in storage, adding versatility for family living. A second-floor retreat enhances the home's adaptability, providing an elegant space for leisure or entertainment.

Outdoors, a sweeping alfresco area awaits, perfect for memorable gatherings or leisurely summer evenings. With a sprawling deck, potential for a pool, and close proximity to Big Slide Park, this home caters to outdoor enthusiasts. Just moments from the scenic trails of Gorge Recreation Park, it invites a lifestyle that harmonizes serenity and adventure. No detail has been overlooked, with a spacious double garage featuring a Mercedes battery charger and marine carpet, ensuring functionality with a touch of luxury. The home is also equipped with an efficient electric solar system for sustainable living. Embrace the quiet sophistication and privacy of this refined sanctuary—a place to truly call home!

More to love:

- Built in 2016

- Prime Adelaide Hills Location – just 30 minutes to Adelaide CBD and the renowned McLaren Vale Wine Region

- Walking distance to Big Slide Park and Gorge Recreation Park

- Zoned for Mitcham Girls High, Springbank Secondary College and moments from St Johns Grammar, Concordia St Peters Campus along with other quality schooling options