

2 Chaplain Place, Bligh Park, NSW, 2756



House For Sale

Friday, 25 October 2024

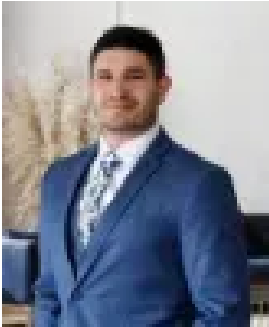
2 Chaplain Place, Bligh Park, NSW, 2756

Bedrooms: 3

Bathrooms: 1

Parkings: 2

Type: House



Bart Portelli
0245880999

RENOVATED HOME, HUGE BACKYARD, ALFRESCO & SIDE ACCESS!!!

Looking to get into the market without having to do any renovations? Then look no further than this stunningly renovated three bedroom home just oozing elegance, style and all the modern comforts expected of a young family. Nestled in a quiet cul-de-sac in the sought after suburb of Bligh Park, this home offers generous living areas, plenty of storage, drive through access and a massive yard perfect for family entertainment. Make your new home just a stone's throw away from local parks and recreational areas, perfect for outdoor enthusiasts. Enjoy the convenience of nearby amenities, including shops, schools, public transport and access to the M7.

Features Include:

- 3 Spacious Bedrooms
- Built in Robes
- Large living Space
- Renovated Kitchen
- Island Bench
- 40mm Stone Benchtops
- Modern Bathroom
- Floating Hybrid Floorboards
- Split System Airconditioning
- Drive Through Access
- Lock Up Carport
- Massive Backyard
- Huge Decorative Concrete Alfresco Area
- Quiet Cul-De-Sac Location

Don't miss the opportunity to make this charming house your new home. Schedule a viewing today and experience all this property has to offer!

****All information about the property has been provided to First National Connect by third parties. First National Connect has not verified the information and does not warrant its accuracy or completeness. All parties should make and only rely on their own independent enquiries in relation to the property****