

2 Mark Street, New Farm, Qld 4005

House For Sale

Thursday, 9 January 2025

2 Mark Street, New Farm, Qld 4005

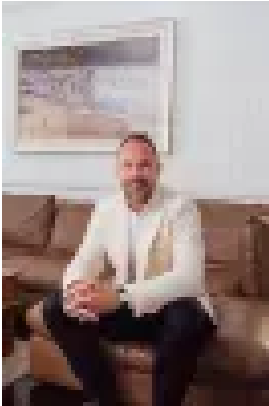
Bedrooms: 3

Bathrooms: 2

Parkings: 4

Area: 430 m2

Type: House



Ivo Kornel



Sarah Kornel

For sale by negotiation

Nestled in Brisbane's most sought-after suburbs, this beautifully renovated abode offers an effortless single-level lifestyle just minutes from all the local amenities. Thoughtfully reimagined to blend timeless charm with modern convenience, the home radiates natural light, creating an inviting and relaxed atmosphere ideal for both living and entertaining. Featuring high ceilings, classic wainscoting and solid timber Hoop Pine floors, the design enhances the home's sense of space and warmth. Enter via the sunroom and office nook, leading to three generously sized, carpeted bedrooms, each with air conditioning for year-round comfort. The serene master suite boasts a walk-in wardrobe and an elegantly appointed en-suite with luxurious gold accents. A second bathroom includes a freestanding bath tub, separate shower, and a double vanity, perfectly complementing the home's layout. The heart of the property is the open-plan living room and formal dining area- complete with a cozy fireplace. All this is seamlessly connected to a chef's kitchen featuring waterfall benchtops, a walk-in pantry and premium stainless-steel appliances. It's a space designed for both entertaining and everyday living. Through expansive concertina doors, step out onto a north/northeast-facing balcony, fully enclosed with Aluminum shutters for added privacy, security and airflow. Overlooking the lush backyard, this tranquil alfresco area is perfect and takes me back to Bail... The garden provides ample room for children to play and explore whilst a spa and sauna sit patiently ready for their next use. Convenience is key, with all primary living spaces on one accessible level. The lower level of the home is expertly plumbed to safeguard against flooding and moisture, providing enhanced durability and practicality. It also boasts ample storage, a versatile home gym, multi-purpose spaces, laundry and four secure car spaces, all enclosed by a gated electric fence for added peace of mind. Enjoy unparalleled access to Brisbane's finest amenities, including New Farm Village, James Street, Howard Smith Wharves, and New Farm Park. Within the catchment zones of prestigious schools such as New Farm State School and Brisbane Grammar, the home also provides easy access to QUT, UQ, and TAFE campuses. A single-level living home is rare in these parts, don't miss out. For a private viewing, please contact Ivo directly on 0412 301 439!