

22 Redunca Close, Helena Valley, WA, 6056

House For Sale

Saturday, 30 November 2024



22 Redunca Close, Helena Valley, WA, 6056

Bedrooms: 4

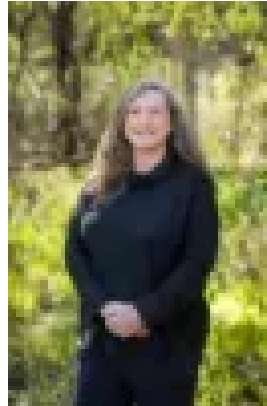
Bathrooms: 2

Parkings: 2

Type: House



Lindsay Earnshaw



Shirley Williams

So Much Space To Thrive

END DATE SALE: ALL OFFERS PRESENTED BY 4pm TUESDAY 10th DECEMBER 2024 (the seller reserves the right to sell prior to the end date without notice).

Loaded with potential for creating your family's dream lifestyle, this big brick and iron home has all the space you need to grow and thrive. Multiple living areas set the tone, from the formal lounge where sunny afternoons are best spent with cups of tea and good company, to the marvellous semi-enclosed entertaining area which can accommodate a small crowd. Designed for year-round good times, the cafe blinds and ceiling fan in this space make it super comfortable while sliding and bifold doors open out to it from the open-plan living and dining area inside. Celebrate milestones with ease; roll out the BBQ, string some fairy lights, pick your playlist, invite your favourite people around, and get the party started! A housewarming is a great place to start.

Additional spaces include a games room and an activity area, both of which are adaptable to your family's hobbies and all the things they love. In fact there's no shortage of potential for fun when it comes to any living area of the house, with the option of a home theatre or gaming setup, a library with a cosy reading nook, a pool table, yoga studio, playroom for little ones, and any number of other possibilities. Best of all, it can all change over time. Meanwhile there's ducted reverse cycle air conditioning for maximum comfort, and a brilliant kitchen equipped with quality appliances and loads of cupboard space. Solar panels and a 10kw battery make the most of the sunshine, with an EV charger in the double carport being the icing on the cake.

Features Include:

- 1998 built brick & iron home
- 4 bedrooms (3 with robes)
- 2 bathrooms
- Front formal lounge
- Open-plan informal living
- Well-appointed & updated kitchen
- Meals & dining area
- Activity area for kids
- Games room
- Ducted reverse cycle air conditioning
- Fabulous semi enclosed patio entertaining area with cafe blinds
- Lovely well-established gardens
- Garden shed/workshop
- Double carport
- Solar panels, 10kw battery & car charger
- 605sqm set in a quiet cul de sac

Beautifully presented, the lawns, shady trees, and established gardens add colour and a sense of serenity to this 605sqm block. Lean fully into a cottage style with roses and wisteria or pop a couple of chickens out the back, plant out a big veggie garden, and embrace a patch-to-plate approach to dinnertime. There are plenty of parks and nature spaces close by to inspire ideas and stoke your imagination, as well as offering places for the whole family to explore. The family friendly cul de sac location makes this a wonderful option for anyone wanting a hint of a tree change while also retaining the sense of community that only comes with living in a family-friendly neighbourhood.

Do not miss this!

For more information on 22 Redunca Close Helena Valley or for friendly advice on any of your real estate needs please call Team Lindsay on 0414 996 706.

* Disclaimer: the team at Earnshaws Real Estate has used our best endeavours to ensure the information here is accurate, but prospective purchasers should always make their own enquiries with the relevant authorities to verify the information in this listing. We accept no liability for any errors, omissions or inaccuracies. All boundary lines, measurements and sizes on our images are approximate.