

**23 Jersey Avenue, Brahma Lodge, SA, 5109**



**House For Sale**

Monday, 28 October 2024

23 Jersey Avenue, Brahma Lodge, SA, 5109

**Bedrooms: 4**

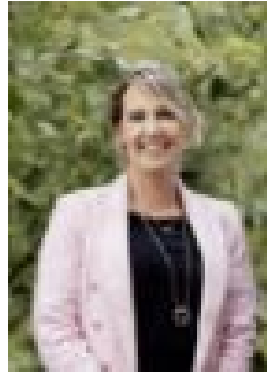
**Bathrooms: 1**

**Parkings: 6**

**Type: House**



Desiree Ebert  
0439043294



Nicole Walker  
0413498021

## Spacious 4 bedroom entertainer's dream home in Brahma Lodge

Welcome to this stunning 1960's circa 4 bedroom, 1 bathroom home in Brahma Lodge, an entertainer's dream! As you step inside, you are greeted by beautiful floorboards and a lovely stained glass door that sets the tone for this cozy and inviting space. This home combines comfort and functionality, making it ideal for both relaxation and entertaining.

### Internal Features:

- Four spacious bedrooms, all with built-in robes and carpet
- Expansive lounge room, perfect for family time
- Open kitchen/meals area with ample storage and bench space
- Walk-in pantry for additional storage
- Large rumpus room, ideal for various activities
- Main bathroom with double vanity and separate toilet for convenience
- Reverse cycle ducted system throughout
- Ducted evaporative cooling throughout

### External Features:

- Generous outdoor entertainment pergola equipped with two fans
- 5.5m x 5m powered shed with sliding doors & concrete flooring for easy access and storage
- Large shaded area for plants and recreation
- Raised garden beds perfect for gardening enthusiasts
- Carport leading to a secure garage for vehicle safety and additional storage
- Ample shaded areas at the front of the house for enjoying the outdoors
- 6.6kw solar system (24 panels)
- External roller shutters to front windows

Located in the desirable Brahma Lodge, this property offers a perfect blend of tranquillity and convenience. Enjoy easy access to local amenities, parks, and schools, making it an ideal environment for families. With its spacious layout and fantastic outdoor entertaining options, this home is ready to welcome its new owners into a life of comfort and joy. Don't miss the opportunity to make this beautiful property your own!

All information provided has been obtained from sources we believe to be accurate; however, we cannot guarantee the information is accurate, and we accept no liability for any errors or omissions (including but not limited to a property's land size, floor plans and size, building age and condition). Interested parties should make their own inquiries and obtain their own legal advice. RLA 278947