

25 Cass Avenue, Croydon, VIC, 3136



House For Sale

Tuesday, 26 November 2024

25 Cass Avenue, Croydon, VIC, 3136

Bedrooms: 4

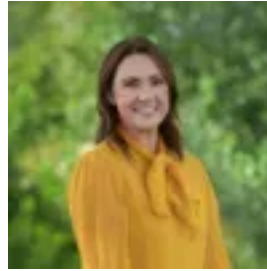
Bathrooms: 2

Parkings: 2

Type: House



Daniel Broadbent
0398706211



Sophie Broadbent
0398706211

Bright free flowing design with elevated Mt Dandenong vistas

An enchanting façade with meticulous dedication to presentation ensure this light soaked Golf Links Estate home has enormous appeal for both the owners and visitors. Established gardens adorned with roses, a crepe myrtle tree and a delicate smoke bush guide you to the full length front veranda, reflecting a spectacular uninterrupted aspect of the Dandenong Ranges. Nestled in an exclusive pocket, closely connected to parks, shopping centres and public transport.

The interiors of this beautiful abode epitomise effortless living with a free flowing layout boasting hardwood polished floorboards. An elegant lounge and dining zone progresses to a sunlit family room with VJ paneled wall and open meals area benefitting from impressive built-in cabinetry and skylights. The kitchen is spotless, catering for the family with quality appliances incl electric oven, gas cooktop and a Bosch dishwasher. Connecting outside with a tranquil alfresco zone that escorts you via merbau steps to a magnificent elevated deck that captures the enticing mountain backdrop and the stunning verdant surrounds for private BBQs and celebrations with family and friends.

Accommodating four bedrooms, cleverly zoned for enhanced adult enjoyment. Comprising a master on entry with statement double doors, walk-in robe and good sized ensuite. The remaining robed bedrooms (one spaced like a second master) are serviced by a warmly lit bathroom with bath and shower. Further enhanced by gas ducted heating, split system, quality window furnishings, laundry, linen press, veggie garden, shed, side gate access, and a double carport.

This wonderful opportunity beckons a young family, surrounded by multiple schools including Croydon PS, Luther and Oxley Colleges, Yarra Valley and Tintern GS and Good Shepherd PS, plus Swinburne TAFE. Stroll to Silcock Reserve and minutes to Warriem and Barneong Reserves. Croydon Central and Main Street cafes and restaurants, along with Chirnside Park and Eastland Shopping Centres, and the Homemaker Centre provide all your retail and dining needs. Close to Croydon Station, local buses and Eastlink. Handy access to Dorset Public Golf Course, and a plethora of Yarra Valley golfing clubs, wineries and gourmet produce. Effortless drive to the Dandenong and Mt Lofty Ranges for a picnic or walk. Homes in this lush undeveloped enclave are highly sought after but seldom found. Brimming with warmth and connection bring balance to your life with this delightful property.

Disclaimer: The information contained herein has been supplied to us and is to be used as a guide only. No information in this report is to be relied on for financial or legal purposes. Although every care has been taken in the preparation of the above information, we stress that particulars herein are for information only and do not constitute representation by the Owners or Agent.