

27 Bridge Road, Officer, VIC, 3809



House For Sale

Friday, 15 November 2024

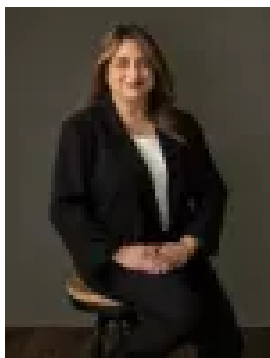
27 Bridge Road, Officer, VIC, 3809

Bedrooms: 6

Bathrooms: 4

Parkings: 3

Type: House



Frances Cutri
0423485688

The Grand Entertainer

Step into an exceptional family haven that perfectly combines luxury, functionality, and space to cater to modern living. This grand six-bedroom, four-bathroom residence, enhanced with two additional powder rooms, is designed with multi generational families and entertainers in mind, offering a seamless flow of indoor and outdoor living spaces and sophisticated details at every turn.

Main Features:

The master suite, positioned on the ground floor for privacy and convenience, boasts a full en-suite and walk-in robe, creating a restful retreat for parents. An additional downstairs bedroom and bathroom make this layout ideal for guests or extended family members, while upstairs, four spacious bedrooms each feature their own walk-in robes, serviced by two bathrooms and two powder rooms.

Open-Plan Living & Chef's Kitchen:

The heart of the home centers around a bright, open-plan living space that flows effortlessly into the modern chef's kitchen. Equipped with high-end stainless-steel appliances, stone bench tops, and extensive cabinetry, this kitchen is truly a chef's dream. A large walk-in pantry with multiple power points is ideal for housing and using appliances neatly within an enclosed cupboard with bi-fold doors. Overhead cabinetry and a large sink with chilled, filtered water further elevate this thoughtfully designed space, which will be the center of gatherings and gourmet meals.

Entertainment & Comfort:

A dedicated theater room offers a cozy escape for family movie nights, while two large upstairs rumpus rooms create zoned spaces for relaxation or play, ideal for families needing flexible living areas. The home is climate-controlled with zoned ducted heating throughout, a powerful split system downstairs, and evaporative cooling upstairs to ensure comfort all year round.

Outdoor Living & Practicality:

Step outside to an expansive alfresco area that seamlessly extends from the open plan living area, setting the stage for outdoor entertaining. The spacious backyard includes a functional, plastered shed with electricity, offering endless possibilities for use as a workshop, gym, or studio. A double lock-up garage with rear access provides direct entry into the home, and additional space accommodates boats, caravans, or extra vehicles, making it perfect for tradespeople or families with recreational vehicles.

Ideal Location:

This residence is ideally located for family convenience, with quick access to the M1 and Princes Highway. Within close proximity, you'll find esteemed schools like Bridgewood Primary, John Henry Primary, Pakenham Lakeside Primary, Officer Secondary College, and St. Clare's Primary, making the school commute a breeze. Local shopping centers and major facilities are just a short drive away, adding to the home's appeal and convenience.

This home presents a unique opportunity for those seeking spacious, versatile, and well-appointed living in a prime location. Embrace the lifestyle you've always

wanted in a home that truly has it all contact us today to arrange a viewing of this extraordinary property.

PHOTO ID REQUIRED AT ALL INSPECTIONS (Private inspections available)

DISCLAIMER: All stated dimensions in the content and photos are approximate only.

Due diligence check list:

<http://www.consumer.vic.gov.au/duediligencechecklist>