

**28-42 Bylong Road, Hillvue, NSW 2340**



**House For Sale**

Tuesday, 7 January 2025

28-42 Bylong Road, Hillvue, NSW 2340

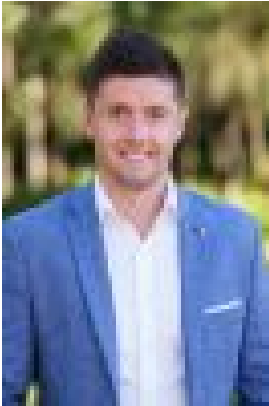
**Bedrooms: 3**

**Bathrooms: 1**

**Parkings: 2**

**Area: 6 m2**

**Type: House**



Sam Spokes

0267671710

## Online Auction Price Guild \$820,000 - \$900,000

Discover the endless potential of 28-42 Bylong Road, Tamworth, a rare offering that combines lifestyle appeal with exciting development possibilities. Set on an expansive parcel of land, this property provides the perfect canvas for those seeking a serene lifestyle escape or a strategic investment opportunity. With its generous size and prime location close to Tamworth's amenities while maintaining a peaceful, semi-rural charm, the possibilities are endless. Only 4 minutes drive from the Tamworth ALECC and sport precinct, as well as 8 mins from the Tamworth CBD. Create your dream rural retreat, establish an equestrian haven, or explore the development potential (subject to council approval). Don't miss this great opportunity. Timed Auction <https://buy.realtair.com/properties/153245>