

3 Tasman Highway, Midway Point, TAS, 7171

PETERSWALD
for property

House For Sale

Friday, 15 November 2024

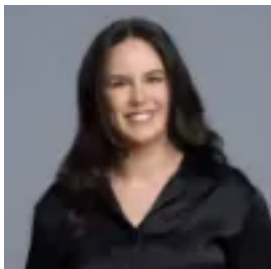
3 Tasman Highway, Midway Point, TAS, 7171

Bedrooms: 3

Bathrooms: 2

Parkings: 4

Type: House



Lucinda Scutt
0400614752

Uninterrupted waterfront vistas and spacious living

Nestled on a spacious block with high-water-title rights extending to the water mark, this property offers an enviable lifestyle on the water's edge with private access down a charming path to the shore.

This impressive 3-bedroom, 2-bathroom home is thoughtfully designed to provide both style and convenience. Step inside to discover a large, open plan living and dining area that serves as the heart of the home. With expansive windows framing sweeping vistas across the water to Woody Island and Five Mile Beach, the light-filled space is ideal for entertaining guests or unwinding with family. The generous layout effortlessly balances a sense of openness with defined spaces, making it both versatile and welcoming.

Each of the three bedrooms are comfortably sized, with the master suite offering spacious ensuite, walk in robe and private balcony for added privacy and convenience. The two bathrooms are well-appointed with the main featuring a spa bath and separate powder room, catering to the needs of a busy household or visiting guests. A large laundry is located with easy access to the washing line, with plenty of space to store linen and cleaning supplies.

Outside, this property truly shines with a range of additional features designed to enhance your lifestyle. The deck provides space to enjoy a morning coffee whilst taking in the vistas and the courtyard is a great space to shelter from the sea breeze and enjoy the afternoon sun. A single-car garage provides secure parking and internal access for ease, while ample driveway space allows for extra parking.

For those with a passion for boating, fishing, or water sports, the substantial onsite shed is a standout feature, offering ideal storage for a boat, trailer, or additional vehicles. Whether you're an avid hobbyist or simply enjoy a bit of extra space, this versatile shed is ready to meet your needs.

The property is just a short drive from Sorell, which has everything you need from shopping, schools and services to playgrounds, sporting clubs and gyms; whilst only being a short drive from the Hobart Airport, convenience is at your doorstep.

Step outside to enjoy a generous yard and the serene waterfront setting, complete with access down to the shoreline. With sweeping water views, a coastal atmosphere, this is more than just a property – it's an invitation to experience a peaceful, connected lifestyle on Tasmania's stunning coastline.

*If attending the open for inspection, we kindly ask you park your vehicle in Garden Lane, Midway Point.

Council rates: \$2,500 pa approx

Water rates: \$1,000 pa approx

Rental estimate: \$600 - \$620 pw approx

Year built: 1999

Construction: Cement sheet