

30 Melbee Street, Rutherford, NSW, 2320



House For Sale

Monday, 28 October 2024

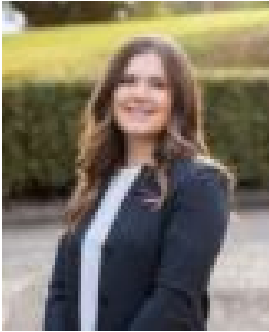
30 Melbee Street, Rutherford, NSW, 2320

Bedrooms: 3

Bathrooms: 1

Parkings: 2

Type: House



Jaide Van Wyck
0429857622

Charming Home in Ideal Location

Perfectly positioned behind established gardens and charming facade, handsome proportions retain their magnificent originality whilst being conveniently located less than 1km to local schools, shops, sporting fields and transport.

In original condition, the character-filled interiors offer superb scope for updating with generous proportions and a superior floor plan providing the basis for you to make your mark on this charming home whilst old school charm presents high ceilings, picture rails and ornate plasterwork throughout.

With three large bedrooms all accommodating built-in robes, the home is suitable for a number of family dynamics.

Destined to inspire those on the quest for charm, character, comfort and scope in a prime position whilst sitting proudly on a 614sqm allotment with side access to a single garage and carport, the combination of location and land size make this an enticing prospect with a variety of features on offer.

Disclaimer: The information herein is collected from sources we trust to be dependable.

However, we cannot guarantee its accuracy, so it is advisable for interested persons to rely on their own enquiries.