

310 Lakedge Avenue, Berkeley Vale, NSW, 2261



House For Sale

Monday, 16 December 2024

310 Lakedge Avenue, Berkeley Vale, NSW, 2261

Bedrooms: 3

Bathrooms: 1

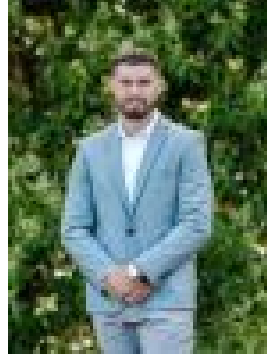
Parkings: 1

Type: House



Ian Boyle

0243139043



Blair Ryan

0416946406

Charming Single-Level Home with Drive-Through Garage

Perfectly positioned in the heart of Berkeley Vale, this single-level brick-and-tile home presents a fantastic opportunity for first-home buyers, downsizers, or investors. With a functional layout, a drive-through garage, and additional side access, this property offers convenience, versatility, and a peaceful lifestyle.

- Single Level
- Light-Filled Open-plan living
- Single lock up Garage with additional side access
- Outdoor Entertaining deck overlooking a quiet, leafy yard
- Separate storage shed
- Generous backyard space with potential for a pool, entertaining area, or granny flat (STCA)

Whether you're ready to move in or want to add your personal touch, this property offers endless potential.

Opportunities like this don't last long! Contact Ian Boyle on 0416 169 606.

Disclaimer: All information about the property has been provided to Ray White Berkeley Vale by third parties. Ray White Berkeley Vale has not verified the information and does not warrant its accuracy or completeness. Parties should make and rely on their own enquiries in relation to the property. We have obtained all information in this document from sources we believe to be reliable; however, we cannot guarantee its accuracy. Prospective purchasers are advised to carry out their own investigations.