

**329 Koala Way, Horsley Park, NSW, 2175**

**BLAZE**  
REAL ESTATE

**House For Sale**

Saturday, 11 January 2025

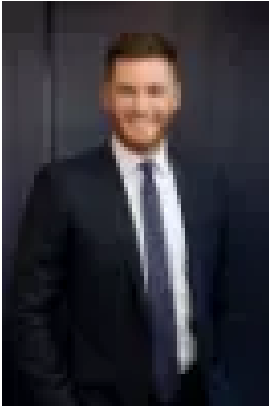
329 Koala Way, Horsley Park, NSW, 2175

**Bedrooms: 6**

**Bathrooms: 5**

**Parkings: 15**

**Type: House**



Blaz Dejanovic  
0287118879

## A timeless masterpiece on 2.5 acres

### Why you'll love it:

Step into a masterpiece of a residence. A rare offering in a highly sought-after locale, this magnificent residence features six spacious bedrooms, including five bathrooms, ensuring ample space and privacy for all.

The grand foyer, lounge, dining and piano rooms boast soaring high ceilings, creating an open and airy atmosphere, whilst the in-ground pool and spa make this an entertainer's paradise. Built to the highest standards, this light-filled abode offers a unique opportunity to experience unparalleled elegance and comfort.

This home is built with unique and classy attributes that include cathedral ceilings, a grand entrance and a list of inclusions that puts this property in a league of its own.

### Features included:

- Six large bedrooms with timber oak flooring and built-in storage
- Five spacious bathrooms to accommodate the entire family.
- Spacious kitchen with stainless steel appliances and granite benchtops perfect for hosting those large family gatherings
- Rumpus room and games room, spaces for the entire family to occupy
- Multiple storage facilities throughout, ideal for the working professional after storage for their tools and equipment
- Abundance of covered and outdoor parking spaces, suitable for trucks, excavators, machinery etc
- Large basement with man cave facility
- Wine cellar, cool room and inbuilt safe
- Large office space in the ground level
- Indoor and outdoor entertainment area overlooking a private spa and inground swimming pool.
- Irrigated and manicured gardens closely watched by Security cameras and guarded by a electric gate.
- Beautifully landscaped surrounding the home, with private circular driveway seamlessly transporting you to a private oasis
- Workshop in the back perfectly blended into the space for operating a business
- All set on approx 2.5 acres of land on one the most sought-after streets in Horsley Park.
- East facing aspect

### Perfectly suited for:

The large growing family, the working-class professional after space for equipment and the family to live and enjoy the serene country lifestyle whilst still living within close proximity to work and lifestyle resources.