

37 Nursery Road, Croydon, VIC, 3136



House For Sale

Saturday, 16 November 2024

37 Nursery Road, Croydon, VIC, 3136

Bedrooms: 3

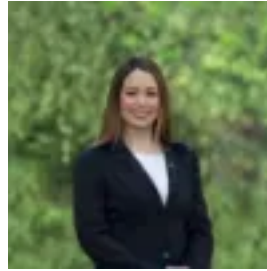
Bathrooms: 2

Parkings: 2

Type: House



William Lyall



Jessica Clarke

Incredible family lifestyle and location

An inspired internal layout works perfectly with the north east facing orientation, imbuing the home with natural light, while the appeal of the bowl of court setting is enhanced by a pathway providing effortless connection to Mullum Mullum Creek Trail. Sun washed interiors have been restyled improving on the free flowing three bedroom design geared for family life or downsizing couples requiring caravan parking.

Rich floating flooring adds maintenance ease, along with quality window furnishings in the form of floor to ceiling sheers in the living/dining room and smart blinds throughout, combine with a refreshing monochrome palette in this immaculate single level abode. Delivering an expansive living/dining space with street frontage view beyond lush plantings, and kitchen highlighted by white fronted cabinetry with the convenience of an abundance of drawer space along with quality appliances including dishwasher.

An eye-catching light fitting above the dining table provides a stylish focal point to the casual meals area giving way to neatly landscaped garden and generous grapevine draped outdoor living area. Family orientated, this spacious garden is a hidden haven with pretty garden beds, fruit trees and children's play equipment. Fenced and gated, there's plenty of play space for kids and furkids along with off street parking for a number of vehicles including caravan and double lock up garage.

Internal French doors zone a wide family room where sun pours in through corner windows along with garden views. Perfectly placed to provide relaxed family living at the rear of the home and easy access for laid back outdoor entertaining. Sleeping accommodation is private and peaceful with ensuite master bedroom at the front of the home fitted with walk in robe and soft blue feature wall enhancing the tranquillity of the room. Sharing a central bathroom, separate toilet and laundry, two bedrooms are positioned off a hallway.

Further comforts include dimmable smart lighting in the living room, ducted heating, solar panels and garden shed. Ideally located in a friendly neighbourhood where Christmas celebrations are held in Highland Avenue Reserve and Playground every year and just minutes walk from Mullum Mullum Creek Trail, Grill'd and McDonalds Restaurants, Lipscombe Park Reserve, Good Shepherd Primary School, Kalinda Primary School, Luther College, Yarra Valley Grammar, Melba College, McAdam Square shops and cafes, near Swinburne University, Main St shops and cafes, Croydon Central Shopping Centre, Croydon Memorial Pool, Town Park, Aquahub, bus services, Croydon Train Station plus Eastlink.

Disclaimer: The information contained herein has been supplied to us and is to be used as a guide only. No information in this report is to be relied on for financial or legal purposes. Although every care has been taken in the preparation of the above information, we stress that particulars herein are for information only and do not constitute representation by the Owners or Agent.