

**38 Adelaide Street, Oxley Park, NSW, 2760**



**House For Sale**

Tuesday, 31 December 2024

38 Adelaide Street, Oxley Park, NSW, 2760

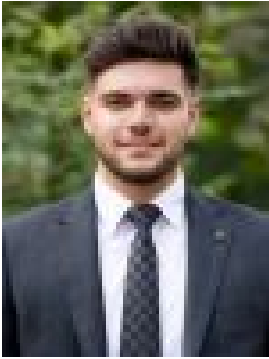
**Bedrooms: 3**

**Bathrooms: 1**

**Parkings: 6**

**Area: 982 m2**

**Type: House**



Eli Alkassar

0296234033

## **LOOK AT THE LOCATION!**

We are pleased to present 38 Adelaide Street, Oxley Park by award winning agent Eli Alkassar

Attention developers and investors: seize this fantastic opportunity to secure a 982 sqm block in a popular and quiet sought-after location. This prime piece of land could be the site for your dream home or your next project.

Ideally situated just minutes from Queen Street shops, St Marys Village, schools, childcare centers, and public transport, this location is approximately 2 km from St Marys Train Station, which is set to become a metro stop for the upcoming airport currently under construction.

### **KEYS FEATURES:**

- HUGE Development Opportunity
- Duplex & Granny Flat Potential S.T.C.A
- 982 SQM - ZONED R3
- Spacious bedrooms with built-ins
- Tiled bathroom with separate shower & bath
- Separate lounge and dining area
- Secure double lock up garage

For further information, please contact Eli Alkassar 0451 019 524

Disclaimer: The above information has been gathered from sources that we believe are reliable. However, we cannot guarantee the accuracy of this information and nor do we accept responsibility for its accuracy. Any interested parties should rely on their own enquiries and judgment to determine the accuracy of this information for their own purposes. Images are for illustrative and design purposes only and do not represent the final product or finishes