

38 Leda Drive, Tarneit, Vic 3029



House For Rent

Tuesday, 7 January 2025

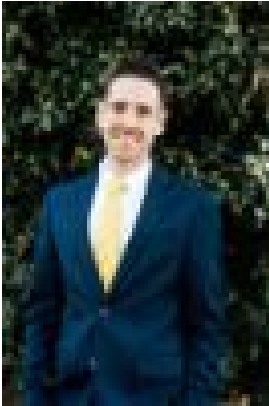
38 Leda Drive, Tarneit, Vic 3029

Bedrooms: 4

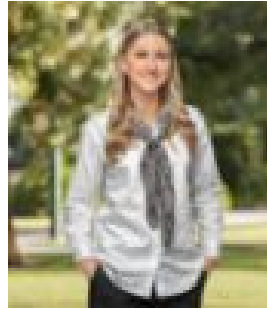
Bathrooms: 2

Parkings: 2

Type: House



Marc Tanti
0428291906



Maya Hunak
0400103812

\$550 per week

Ray White Werribee proudly presents this stunner of a house in the prestigious Rose Grange Estate of Tarneit suburb; this spacious family home is literally just walking distance from Bus Stops, Tarneit Railway Station, Tarneit Library, Tarneit Central Shopping Centre, walking trails, parks and schools. The home comprises of four generous sized bedrooms which are serviced by the central bathroom and separate toilet. The kitchen is equipped with a pantry and stainless steel appliances. Features include:- 4 Bedroom and 2 separate living areas- Master bedroom with en-suite and walk-in-robe- Central kitchen with stainless steel appliances- Ducted heating and split system cooling- Double remote garage- Spacious driveway for multiple vehicles- Garden Shed- Low maintenance yards All of the amenities are within close proximity :• 650 m (approx.) to Tarneit Library• 900 m (approx.) to Tarneit Railway station• 350 m (approx.) to nearby Parks & Walking trails• 550 m (approx.) to Tarneit Early Learning Centre• 500 m (approx.) to Tarneit Central Shopping Centre• 550 m (approx.) to Baden Powell P-9 Tarneit College Call 9974 0000 for all your enquiries! Inspections are subject to cancellation or time changes without notice Photo ID required to inspect all rental properties Applicants must view the property before any applications will be processed Every precaution has been taken to establish the accuracy of the above information but does not constitute any representation by the landlord or agent.