

387B Anzac Highway, Camden Park, SA, 5038

NOAKES
NICKOLAS

House For Sale

Wednesday, 13 November 2024

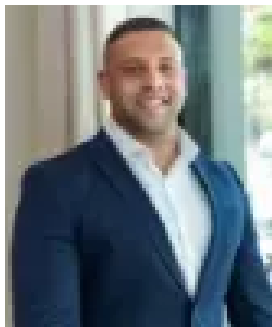
387B Anzac Highway, Camden Park, SA, 5038

Bedrooms: 3

Bathrooms: 2

Parkings: 2

Type: House



Jorden Tresidder

0881663989

A modern townhouse between city & sea.

Best Offers By 2/12 at 1pm - Unless Sold Prior.

Striking the perfect position between the lively city and laidback coastline, this three-bedroom townhouse sits in the middle to ensure your lifestyle is full of convenience, comfort and contemporary style.

Behind the chic contrast of crisp white render and monument cladding, the lower level feels light and spacious within its open plan proportions; combining living, dining and a sleek kitchen offering the best in Bosch appliances and stone benchtops to ensure your culinary creations sing.

The north-facing alfresco is primed to entertain or play host to a quiet morning moment to enjoy your coffee and breathe before the workday begins tranquilly surrounded by bamboo, timber bench seating, a wall of greenery and requiring zero upkeep.

Bookending the upstairs retreat, the lavishly large master bestows a walk-in robe and ensuite for the household heads, whilst both additional bedrooms are tucked away with a bathroom to the back, forming a quiet wing for kids or guests.

For flexibility, space and style in spades you'll fall in love with the ultimate feel-good lifestyle between city and sea.

Features

- Secure double garage with internal access
- Dual living zones
- Built-in robes to bedrooms 2 & 3
- Two fully tiled bathrooms, main with bathtub
- Downstairs powder room
- North-facing alfresco with easy-care surrounds
- Ducted air conditioning
- Solar panels

Lifestyle

- Footsteps from bus stop, Plympton Park tramline & Plympton Oval
- Moments to Glenelg Golf Club, Kurralta Central & Westfield Marion
- Zoned for Plympton International College, moments to Plympton Primary, St. John the Baptist, Emmaus & Immanuel College
- Just 5-minutes to Glenelg & 10-minutes from the CBD

Rates

- Council \$850PA
- SA Water \$PQ
- ES Levy \$148PA
- Community \$265PA
- City of West Torrens
- Community
- Built 2022

Disclaimer at noakesnickolas.com.au | RLA 315571