

4 Sky Crescent, Pimpama, Qld 4209

House For Rent

Thursday, 13 June 2024

4 Sky Crescent, Pimpama, Qld 4209

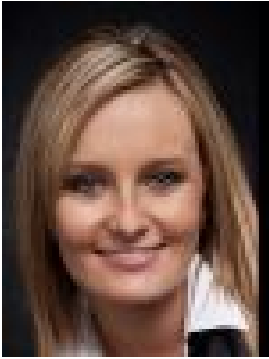
Bedrooms: 4

Bathrooms: 2

Parkings: 2

Area: 446 m2

Type: House



Evolve Sales Management
0756659733

\$690 per week

* We respect your time and ours, you will be contacted 60 minutes prior to the scheduled inspection. If you don't confirm via phone or email we will not show *A perfect balance between natural beauty and architectural form. Located on the northern Gold Coast just 20 minutes from the beaches of Surfers Paradise; with excellent schools, sports, and recreation facilities, medical services and shopping centers just minutes away. The Heights is superbly located between Brisbane and the Gold Coast. Easy access to the M1 places you only 40 minutes from the culture and commerce of Brisbane, with Coomera Train Station an easy 10-minute drive away Features include: * 4 Bedrooms with built-ins & ceiling fans* Master with WIR, air conditioning and ensuite* 2 finished bathrooms * Master with ensuite & double basin* Open plan Living & Dining with split system air conditioning* Beautiful floating timber flooring throughout* Modern kitchen with gas cooking, stone benches, stainless steel appliances inc dishwasher* Internal Laundry room with external access* Automatic double lock up garage with internal access* Fully fenced yard* Landscaped lawns & gardens Rent increases to \$690 from April 2025