

41b Cowle Street, West Perth, WA, 6005

House For Sale

Thursday, 28 November 2024

haiven
PROPERTY

41b Cowle Street, West Perth, WA, 6005

Bedrooms: 4

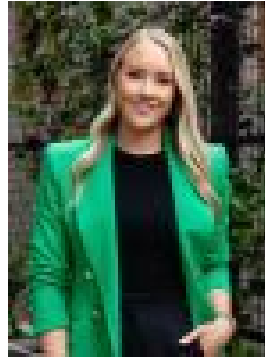
Bathrooms: 3

Parkings: 2

Type: House



Paul DiLanzo
0892030777



Montana Colreavy
0892030777

THE ENTERTAINER.

ALL OFFERS PRESENTED 4PM TUESDAY 10TH DECEMBER 2024

Sophisticated, elegant and designer, this home is PERFECT FOR THE ENTERTAINER, the family or the downsizer. Generously proportioned both inside and out with a great sense of privacy and security.

The flexible floor plan works for many different family combinations and with light filled and airy design, you will be spoilt for choice here.

THE DETAILS :

- Spacious open plan living and meals area with tiled floors and high ceilings.
- Superb kitchen with big island bench, lots of cabinets and storage, plenty of work space, cocktail/crockery cabinet and scullery.
- Dual electric under bench ovens.
- 5 burner ceramic top gas cooker.
- Wine fridge.
- Integrated dishwasher.
- Seperate laundry with access to drying court.
- Covered alfresco area with built in out door kitchen and lawned area.
- Guest bedroom / work from home space/studio on ground floor.
- Large ensuite bathroom / podwer room for guests.
- Big master bedroom with long bank of built in robes and private luxurious ensuite bathroom including double vanity, shower and separate toilet.
- Two more double minor bedrooms both with built in robes.
- Large main bathroom with shower, vanity and separate toilet.
- Double lock up remote garage with store area and shoppers entry direct into the home.
- High ceilings and tiled floor to ground floor except guest bedroom.
- Ducted reverse cycle air-conditioning throughout.
- No strata fees. Common drive insurance only to share amongst owners.
- Perfectly located close to the Perth CBD, Northbridge is only a short stroll away, North Perth shopping plaza and café strip is up the road and Leederville is about 2km's away.
- Outdoor beer fridge.
- Built in BBQ.
- Built: 2024
- Total living: 160sqm (approx)
- Total land: 182sqm (as per title)

OUTGOINGS :

- Council rates: \$TBI
- Water rates: \$TBI