

44 Beames Crescent, Cannon Valley, QLD, 4800



House For Sale

Sunday, 3 November 2024

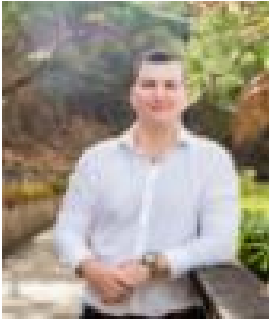
44 Beames Crescent, Cannon Valley, QLD, 4800

Bedrooms: 4

Bathrooms: 2

Parkings: 2

Type: House



Jeremiah Roberts

0487856617

Contemporary Family Home In Sought After Estate

Welcome to 44 Beames Crescent, Cannon Valley!

This beautiful near-new home, completed in 2021, perfectly complements the prestigious residences within the Galbraith Park Estate. Set on a generous 1,766 sqm block, it elegantly combines contemporary style with practical family living in a highly sought-after location.

This property features four generously sized bedrooms and two modern bathrooms. It showcases stunning street appeal and meticulous landscaping that greets you upon arrival. Upon entering, you are welcomed into the open-plan kitchen, dining, and living area, which seamlessly connects to the large back deck through sliding doors, perfect for indoor-outdoor entertaining.

The master bedroom is a true retreat, featuring a large ensuite and two walk-in wardrobes for ample storage. The kitchen, at the heart of the home, boasts high-end finishes, a large gas cooktop, a full-length breakfast bar featuring white stone benchtops, and a large walk-in pantry, making it a culinary enthusiast's dream. The spacious back deck overlooks the lush, low-maintenance backyard, providing an ideal space for relaxation or gatherings with friends and family. The remainder of the backyard has ample room for future enhancements, such as a pool or shed.

This home is equipped with solar power, offering energy efficiency and potential savings on utility bills, adding to the overall appeal of this stunning property.

The property features a double-car garage, offering convenience and security for your vehicles. If the garage isn't quite enough, the side access allows for undercover parking beneath the home for boats, caravans, or extra vehicles. Additionally, the workshop area beneath the home is perfect for projects or additional storage, catering to the practical needs of any homeowner.

Conveniently located near major shopping precincts, schools, parks, and just an 8-minute drive to the vibrant heart of Airlie Beach, this property beautifully balances peaceful suburban living with easy access to amenities. The Galbraith Park community is celebrated for its family-friendly atmosphere, making it an ideal choice for those looking to establish a home in a welcoming neighborhood.

Don't miss this opportunity to make this exquisite home yours!

Disclaimer: Ray White Whitsunday has prepared this information to the best of its ability. While we strive for accuracy, we accept no responsibility for errors or omissions. Prospective buyers should verify all information independently.