

**45 Illuka Crescent, Mount Waverley, Vic 3149**

**House For Sale**

Wednesday, 8 January 2025



45 Illuka Crescent, Mount Waverley, Vic 3149

**Bedrooms: 5**

**Bathrooms: 5**

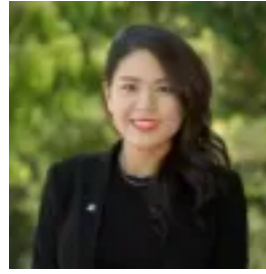
**Parkings: 2**

**Area: 758 m2**

**Type: House**



Jared Wei  
0413260872



Sue Li  
0499556445

## **Expression of Interest Closing Tue 18th Feb at 4pm**

A grand French Provincial design delivers an unparalleled level of luxury in this magnificent brand new residence, radiating opulence and prestige at every turn. Splendid architectural proportions have been crafted for the ultimate in living and entertaining, with meticulous attention to detail that includes a range of premium materials, imposing entry foyer, coffered ceilings, timber flooring and soaring void with a stunning chandelier. Breathtaking zoned accommodation is introduced by an elegant formal lounge, that effortlessly flows through to the vast open-plan living/dining/family domain featuring an ambient gas log fireplace. The lavish kitchen is a true inspiration for the home chef, flaunting marble bench tops, high-end Miele appliances including semi-integrated dishwasher and Butler's kitchen. An extraordinary sense of space is further highlighted by 5 double robed bedrooms, each luxuriously fitted with a stunning ensuite, including a palatial master suite offering a parent retreat and dual-vanity ensuite with double shower. An exhaustive list of extras propel this sophisticated home to an elite level, including heating/AC, powder room, home office, keyless entry, beautiful light fittings, entertaining alfresco, putting green, custom joinery, balcony, retreat with kitchenette, auto entry gate and double garage. Situated in the highly-regarded Pinewood Primary and GWSC catchments, a walk to Pinewood Reserve, Pinewood shops and primary school and a minute drive to the M1 Freeway.